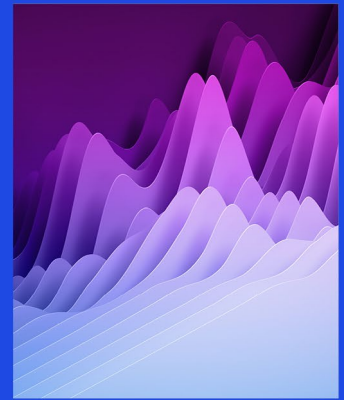




# KPMG AEOI Updates & Tracking Service FATCA/CRS Alert



<b>Date:</b>	18 September 2025	<b>Alert Type:</b>	Announcement
<b>Country:</b>	South Africa	<b>Regime:</b>	FATCA/CRS

## South Africa: Announced FATCA and CRS Third-Party Data Bi-Annual Submission Period

On 01 September 2025, the South Africa Revenue Service (SARS) announced the commencement of its Third-Party Data Bi-Annual Submissions process for the reporting period 01 March 2025 to 31 August 2025, which includes submissions for the Automatic Exchange of Information (FATCA and CRS). The submission window will remain open from 01 September 2025 to 31 October 2025.

To ensure a smooth and compliant filing process, SARS recommends that Reporting Financial Institutions (RFIs) first validate their data files using the SARS Test Platform before submitting them on the Live Platform. The Test Platform will be available throughout the submission period and helps ensure that the data files meet the requirements outlined in the External Business Requirement Specification (BRS).

RFIs are also advised to check the response code after each submission. A response code of 003 or 004 confirms that the file has been successfully uploaded.

## South Africa Contacts:



**Finn Elliot**  
Partner, Tax  
[Finn.Elliot@kpmg.co.za](mailto:Finn.Elliot@kpmg.co.za)



**Beulah Simpson**  
Associate Director  
[beulah.simpson@kpmg.co.za](mailto:beulah.simpson@kpmg.co.za)

Reference: [Announcement](#)

For information on KPMG's global AEOI network professionals, please email [GO-FM AEOI Program Support](#).

For more information on KPMG AEOI Updates & Tracking Service, please see [here](#).

For additional summaries of the latest AEOI developments, please visit KPMG's TaxNewsFlash-FATCA/IGA/CRS Insights page, [here](#).

## Contact us



**Laurie Hatten-Boyd**  
**Principal**

T: +1 206 213 4001  
E: lhattenboyd@kpmg.com

Some or all of the services described herein may not be permissible for KPMG audit clients and their affiliates or related entities.

[kpmg.com/socialmedia](https://kpmg.com/socialmedia)



**Kelli Wooten**  
**Principal**

T: +1 404 739 5888  
E: kwooten@KPMG.com

Learn about us:



[kpmg.com](https://kpmg.com)

© 2025 KPMG LLP, a Delaware limited liability partnership and a member firm of the KPMG global organization of independent member firms affiliated with KPMG International Limited, a private English company limited by guarantee. All rights reserved. USCS010555-1A

The KPMG name and logo are trademarks used under license by the independent member firms of the KPMG global organization.