



Issues and Insights

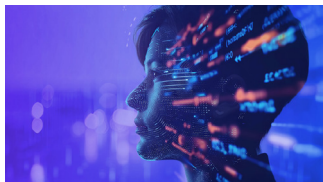
In this edition: The rise of AI agents, tariff tensions, Q1 IPOs, consumer price concerns, what the new DOJ data rule means, more

July 2025



Navigating the future: How tech can harness AI to drive transformation

This broad report details key elements of a customer-centric technology enterprise and offers a blueprint to accelerate AI adoption. Balancing immediate returns with long-term goals, the report lays out the steps to unlocking the true value of AI in the fast-moving technology industry.
[The intelligent tech enterprise](#)



Thriving amid tariff uncertainty

How can technology, media, and telecommunications companies mitigate immediate and long-term tariff risks? In today's environment, safeguarding financial performance requires a strategic, cross-functional approach involving tax, trade, supply chain, and sourcing. Here's how to do it.
[Thriving amid tariff uncertainty: How technology, media, and telecommunications companies can mitigate immediate and long-term risks](#)



Volume, proceeds rise in Q1 IPOs

The first quarter of 2025 was one of the best in the past two years, with US IPO volume up 7 percent and an increase in gross proceeds from these activities of 60 percent over the previous quarter. Three megadeals accounted for more than half the quarter's proceeds, and we analyze what these Q1 results might auger for the remainder of the year.
[IPO Insights Q1'25](#)



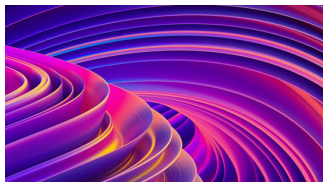
Price problems weigh on sales

Retail sales dropped -0.9% in May, missing consensus expectations for -0.7%. That follows a downwardly revised -0.1% in April. However, core retail sales—which exclude eating and drinking places, automobile dealers, gasoline stations, and building materials stores—climbed 0.4% in May. Why? Get the insights here.
[Misleading drop in retail sales](#)



AI agents: From tools to teammates

Four out of five leaders agree that AI will change their industry's competitive landscape in the next 24 months, according to the latest KPMG AI Quarterly Pulse Survey. Organizations are deploying and scaling their AI agent capabilities, moving them from the experimental to the active stage, and using them to cut costs and create new value.
[AI Agents Move Beyond Experimentation as Leaders Prepare for Competitive Transformation Within 24 Months](#)



How to comply with the new DOJ data rule

The Department of Justice (DOJ) has introduced a new rule that restricts the bulk transfer of sensitive personal data to countries of concern. To help navigate these changes, with their significant implications for organizations, here are practical guidance and detailed insights for complying with the new regulations.
[Compliance with the DOJ data rule](#)

Some or all of the services described herein may not be permissible for KPMG audit clients and their affiliates or related entities.

Learn about us:  [kpmg.com](https://www.kpmg.com)