



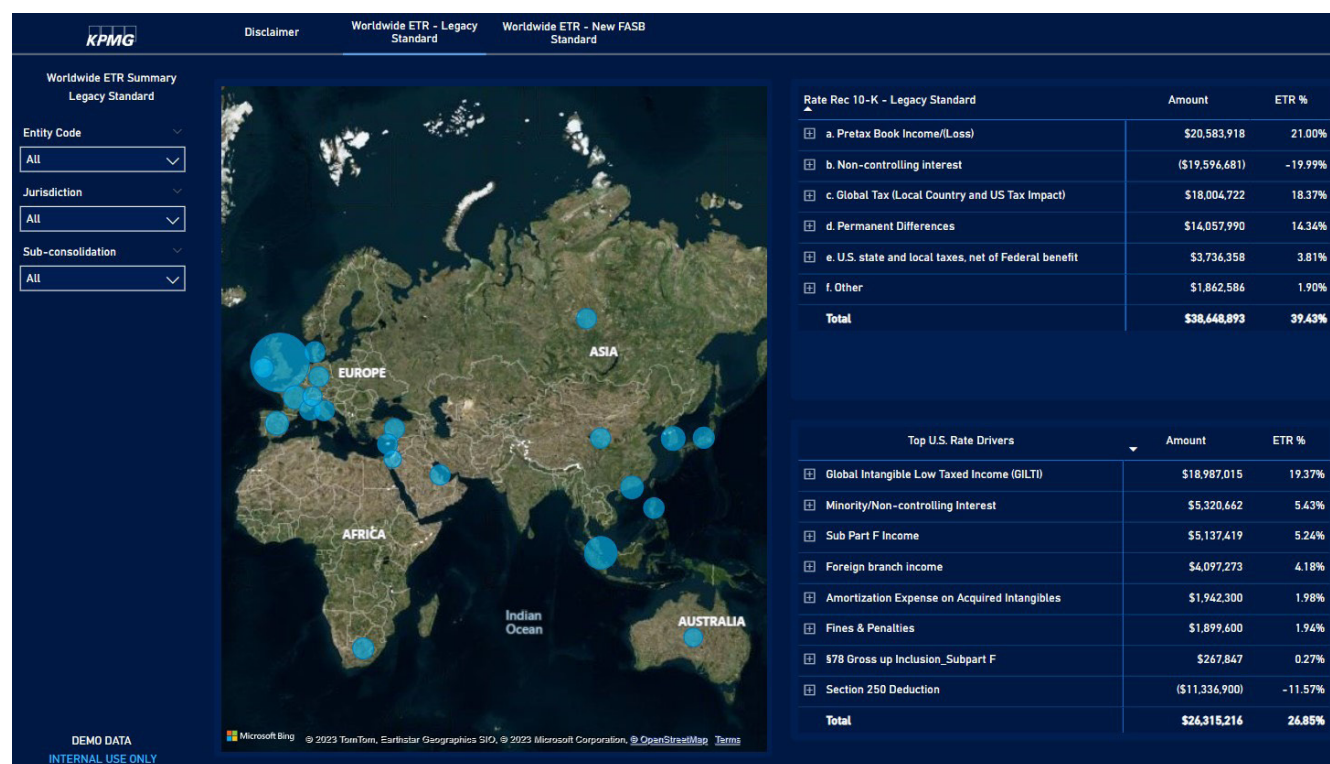
KPMG Income Tax Provision Building Blocks

Effective Tax Rate Analyzer

Companies frequently face challenges from stakeholders demanding quicker and clearer explanations of income tax expense drivers. The complexity of analyzing multiple entities, jurisdictions, data sources, and periods, coupled with limitations in existing income tax provision software, often leads to delays and inefficiencies.

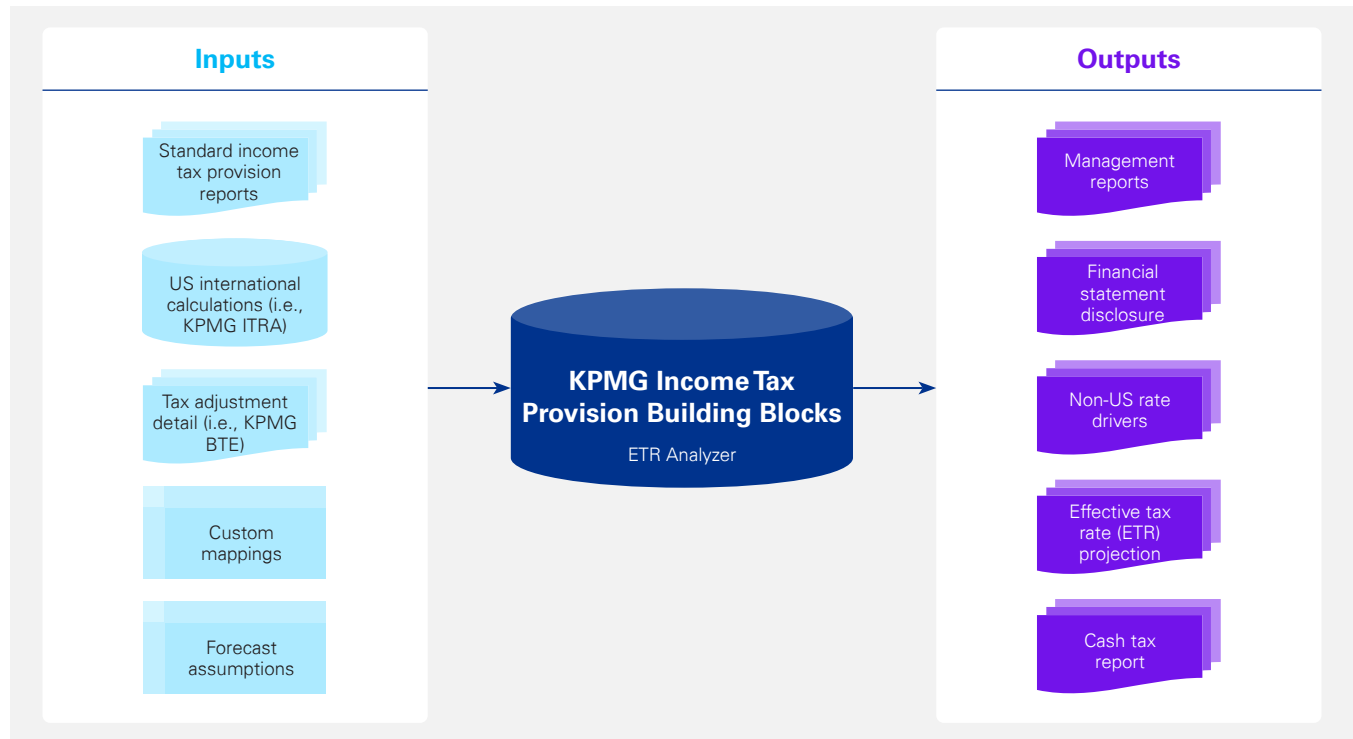
When engaging KPMG LLP (KPMG) for tax provision assistance, we offer clients value-added reporting from our Effective Tax Rate Analyzer, providing a top-down view of the effective tax rate with the ability to drill down to source data:

- ▶ Reduces turnaround time to prepare and review financial statement disclosure and management reporting including the new ASU 2023-09 requirements
- ▶ Provides insights into foreign rate differential and non-US rate drivers to help identify tax planning opportunities

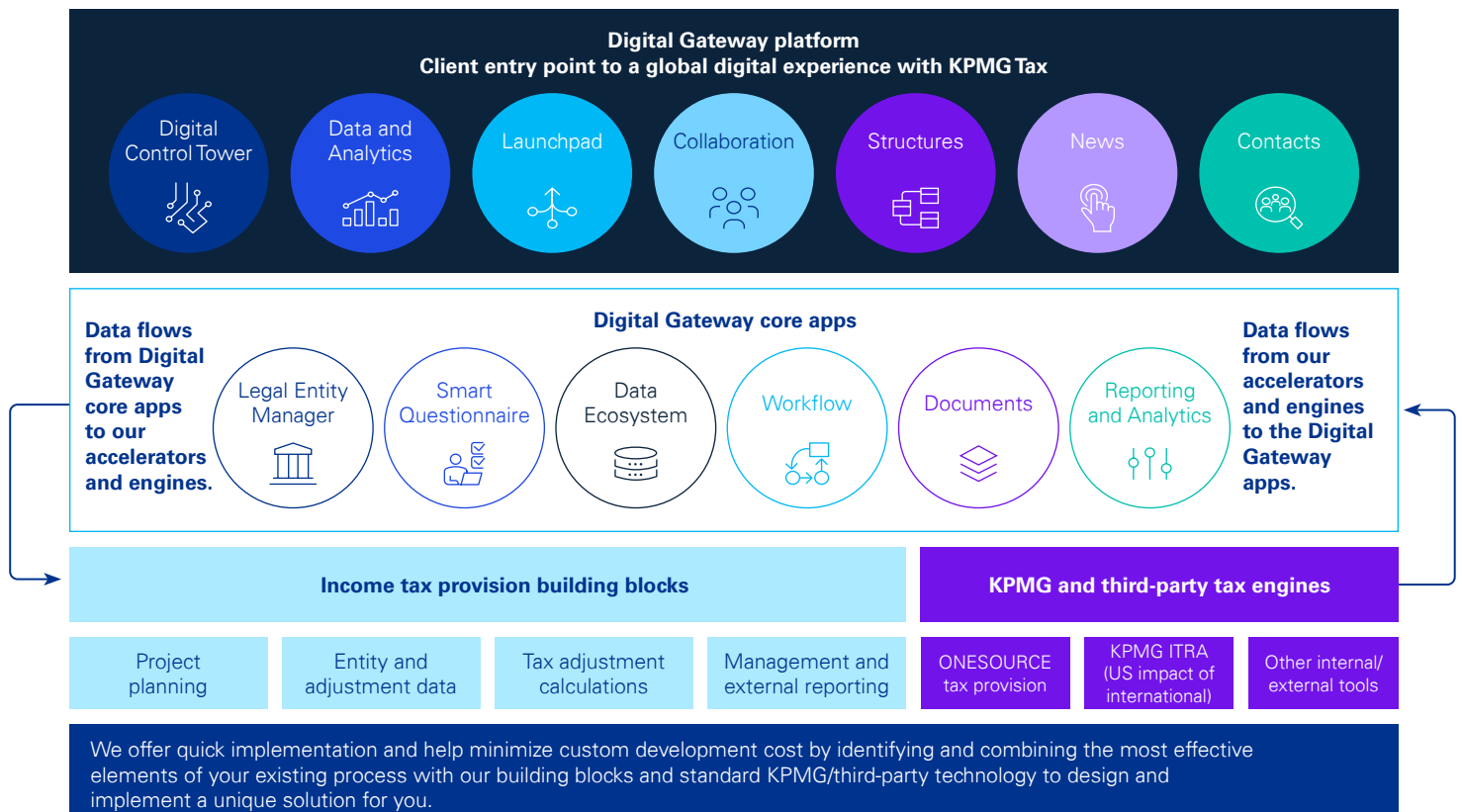


Key functionalities of our proprietary accelerator

- Transformation of disparate data into a standard data model at the lowest level of detail
- Automation of various disclosure thresholds and requirements
- Illustrate period-over-period data in granular level of detail to identify variance explanations
- Ability to report and filter based on entity, region, business unit, etc.



Our tax provision process and technology philosophy:

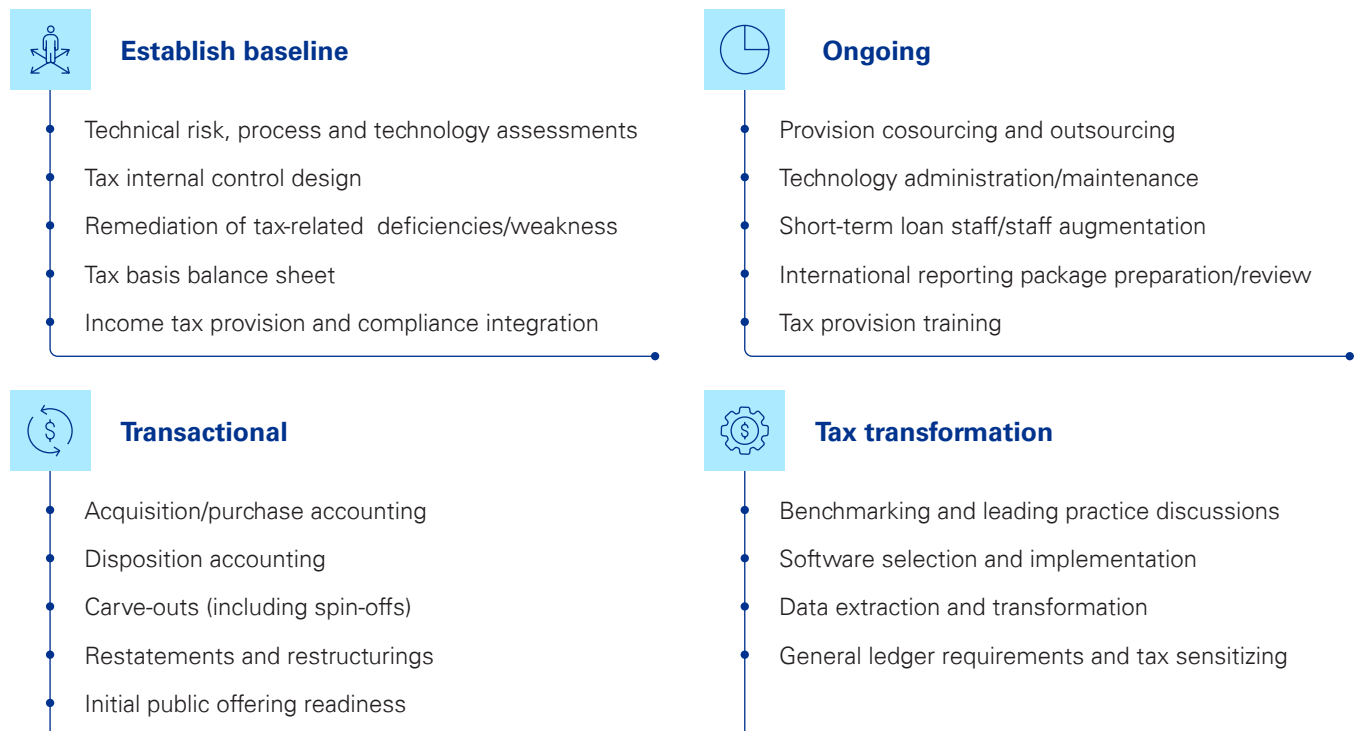


To address other common challenges for organizations, KPMG has developed a proprietary technology-enabled process known as the Income Tax Provision Building Blocks. This approach leverages advanced tools and methodologies to streamline processes, helping ensure compliance and enhancing accuracy. By integrating advanced technology with deep tax expertise, the Income Tax Provision Building Blocks provide a robust framework that helps organizations navigate the intricacies of tax regulations and reporting requirements with confidence.

KPMG Income Tax Provision Building Blocks: a proprietary technology-enabled process



KPMG tax provision assistance services



Why KPMG?

- Ability to leverage (at minimal incremental cost) our portfolio of proprietary wide-ranging tax provision process accelerators built on years of accumulated leading practices—from scoping/project management to our Effective Tax Rate Analyzer
- Delivery team members dedicated to income tax provision projects have convergent tax technical and technology skill set



Contact us for a demo and information on our services



Rachel Braukman
Partner, Tax
T: 656-227-0709
E: rbraukman@kpmg.com



Steven C. Fistere
Partner, Tax
T: 703-286-8045
E: sfistere@kpmg.com



Leland Powell Jr.
Partner, Tax
T: 704-891-9335
E: lpowelljr@kpmg.com



Amy Walker
Partner, Tax
T: 651-247-8822
E: aswalker@kpmg.com



Shelly Schilling
Managing Director, Tax
T: 210-270-1695
E: shellyschilling@kpmg.com



Elioel Cornelio
Senior Manager, Tax
T: 212-758-9700
E: ecornelio@kpmg.com

Some or all of the services described herein may not be permissible for KPMG audit clients and their affiliates or related entities.

Learn about us:



kpmg.com

The information contained herein is of a general nature and based on authorities that are subject to change. Applicability of the information to specific situations should be determined through consultation with your tax adviser.

© 2025 KPMG LLP, a Delaware limited liability partnership and a member firm of the KPMG global organization of independent member firms affiliated with KPMG International Limited, a private English company limited by guarantee. All rights reserved. The KPMG name and logo are trademarks used under license by the independent member firms of the KPMG global organization. USCS027153-1A