

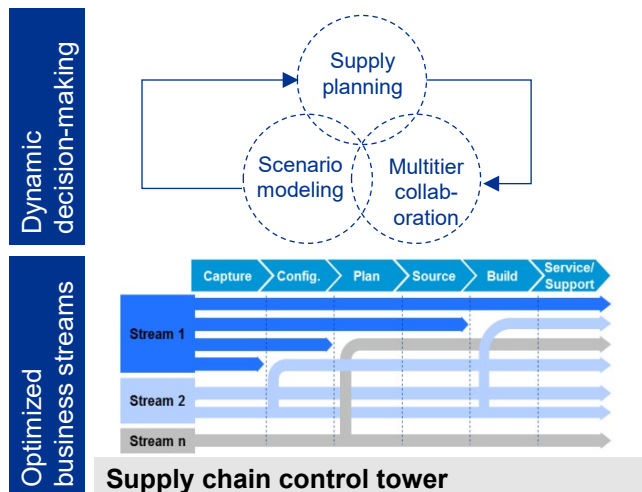


Risk-averse to risk aware: Integrated supply chain planning

Integrated supply chain planning (ISCP) involves enhancing supply chain performance...

ISCP is a functionally led, technology-enabled approach designed to help organizations enhance demand and supply alignment, inventory and resource optimization, and operational efficiency and performance. This solution supports rapid, confident responses to changing requirements through informed and timely decisions.

Making better, faster, risk-aware decisions...



Whole of government

ISCP supports readiness by enhancing coordination, responsiveness, and efficiency across various departments and agencies. Advanced analytics, machine learning, and artificial intelligence enable faster decision-making, optimized resource allocation, and improved visibility and collaboration.



Defense: ISCP enhances the DoD's capability to maintain high levels of readiness and operational efficiency, ensuring that military forces are effectively supported in contested logistics environments.

Civilian: Efficient supply chain management is critical for healthcare, emergency services, infrastructure development, transportation, and other public services agencies to facilitate effective and reliable delivery.

...by reducing operational variance.

Organizations with complex, dynamic, and critical supply chains can benefit from reducing operational variance through ISCP. Reduced variance means reliable results from increased readiness and optimal performance from resources in diverse operational environments.

... leads to better outcomes for the warfighter



Higher availability and readiness rates, including in high operational tempo environments



Improved ability to detect and react to changes in demand or disruption in supply



Aligned working capital and expediting costs to readiness requirements



Increased efficiencies in the planning function, with an emphasis on collaboration

Contact us:

Fred Hensel
Principal, Federal Supply Chain Transformation
412-232-1568
fhensel@kpmg.com

Will Walsh
Manager, Federal Supply Chain Advisory
703-598-4342
williamwalsh1@kpmg.com

Some or all of the services described herein may not be permissible for KPMG audit clients and their affiliates or related entities.

Learn about us:



[kpmg.com](https://www.kpmg.com)

The information contained herein is of a general nature and is not intended to address the circumstances of any particular individual or entity. Although we endeavor to provide accurate and timely information, there can be no guarantee that such information is accurate as of the date it is received or that it will continue to be accurate in the future. No one should act upon such information without appropriate professional advice after a thorough examination of the particular situation.

© 2025 KPMG LLP, a Delaware limited liability partnership and a member firm of the KPMG global organization of independent member firms affiliated with KPMG International Limited, a private English company limited by guarantee. All rights reserved. USCS034523-1E

The KPMG name and logo are trademarks used under license by the independent member firms of the KPMG global organization.