



IP and Supply Chain in a Pillar Two World

June 11, 2024

Ahead
of the **wave**

2024 U.S. Cross-Border Tax Conference



Notices

The following information is not intended to be “written advice concerning one or more Federal tax matters” subject to the requirements of section 10.37(a)(2) of Treasury Department Circular 230.

The information contained herein is of a general nature and based on authorities that are subject to change. Applicability of the information to specific situations should be determined through consultation with your tax adviser.

With you today

Matt Krause

Head of Global Tax
C.H. Robinson

Paul Glunt

Principal
International Tax—
Value Chain
Management, KPMG

Matt McNeill

Principal
International Tax—
Value Chain
Management, KPMG

Marissa Rensen

Managing Director
International Tax—
Washington National
Tax, KPMG

Agenda

WHY are companies rethinking their IP, holding company, and/or supply chain models?

WHERE are companies focusing their attention?

WHAT assets are companies focused on?

HOW are companies thinking about implementing changes?

Q&A

01

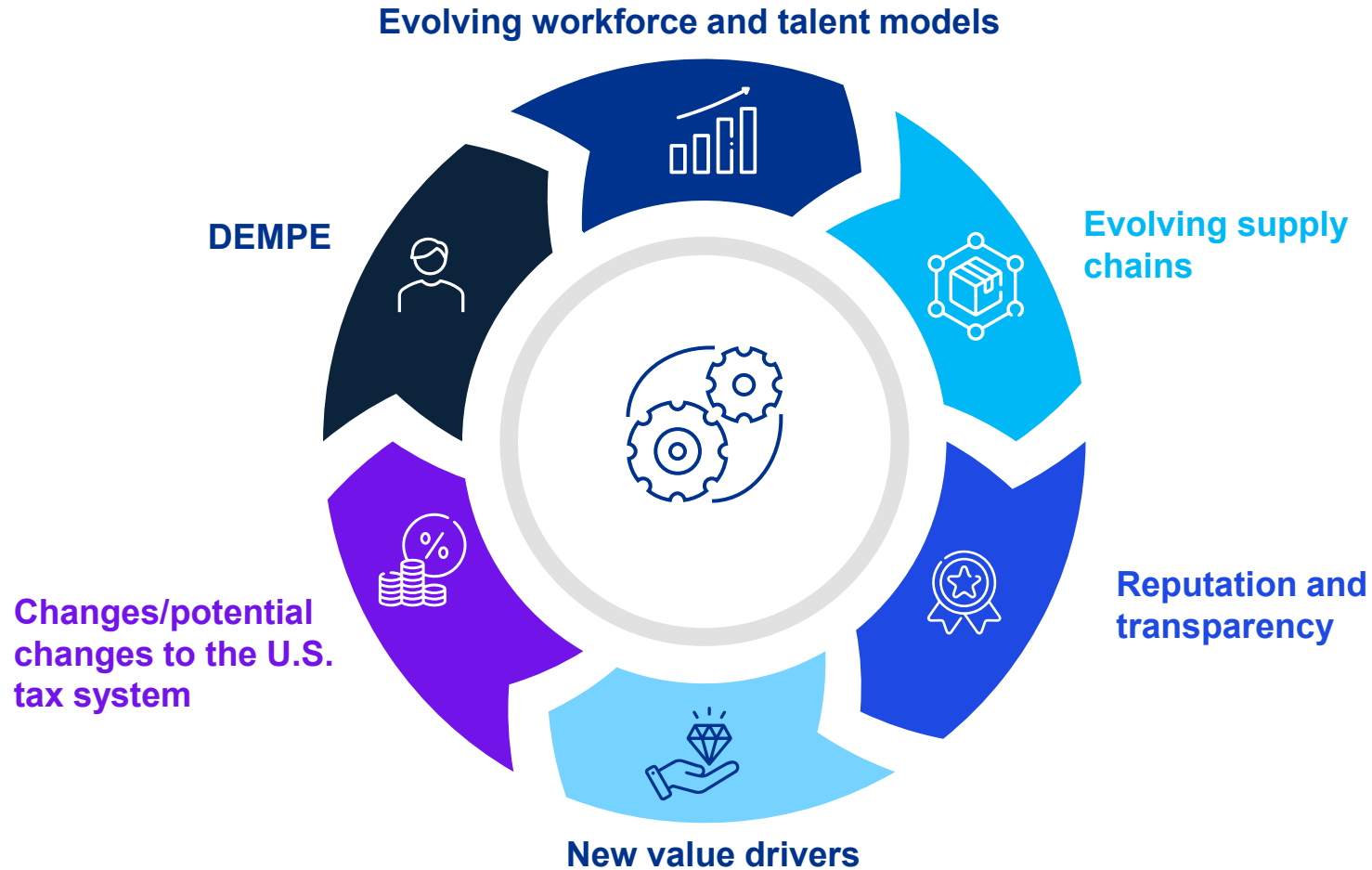
Why?

Why are companies rethinking their IP, holding company, and/or supply chain models?



Why are companies rethinking their IP, holding company, and/or supply chain models?

Pillar 2



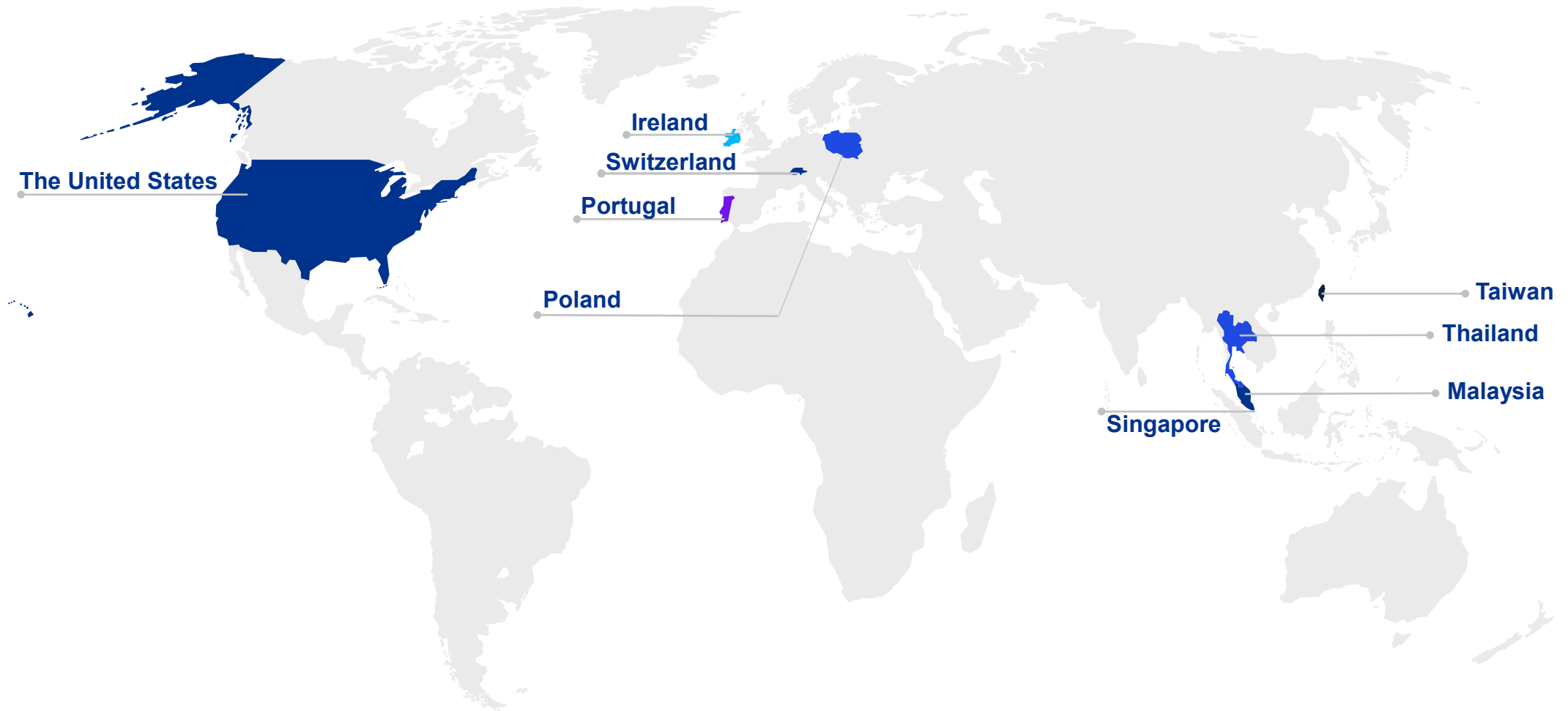
02

Where?

Where are companies focusing their attention?



Where are companies focusing their attention?



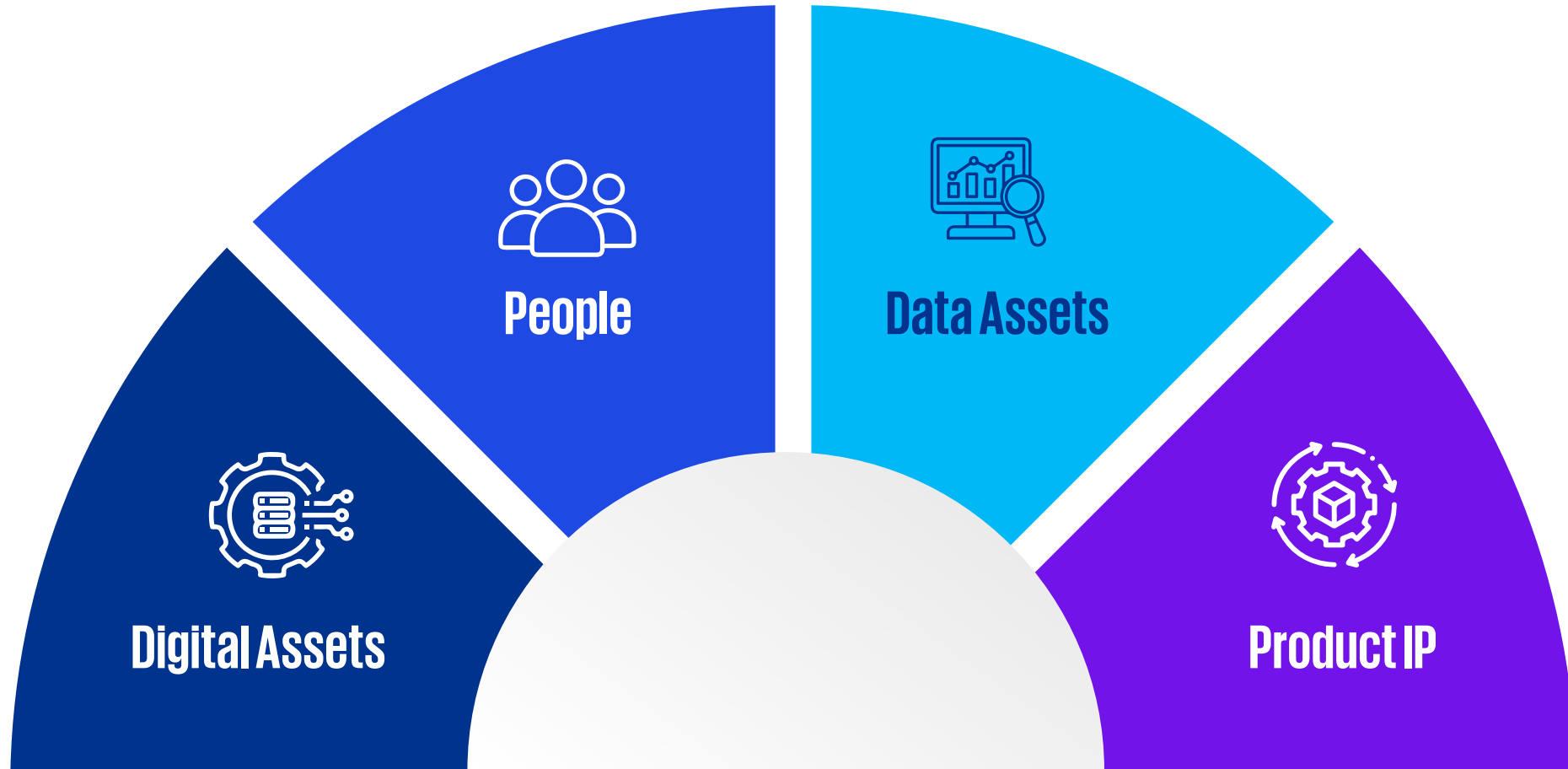
03

What?

What assets are companies focused on?



What assets are companies focused on?

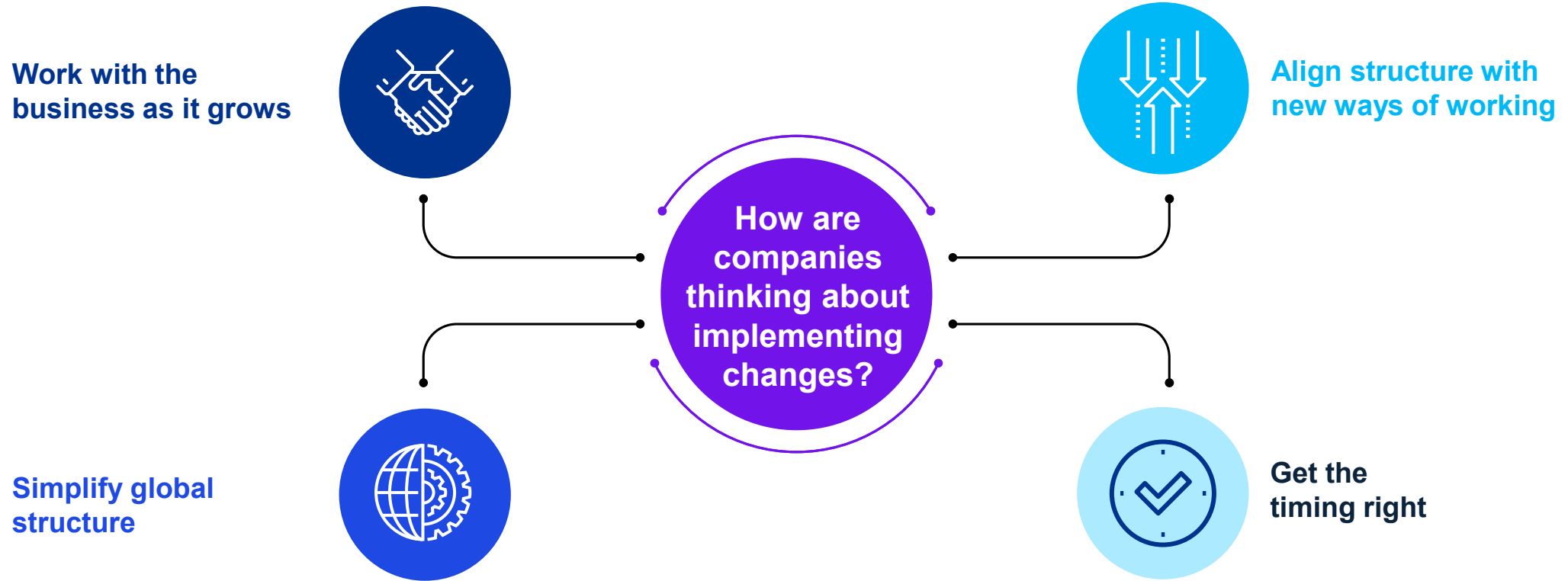


04 How?

How are companies thinking about implementing changes?



How are companies thinking about implementing changes?



05

Q&A





Some or all of the services described herein may not be permissible for KPMG audit clients and their affiliates or related entities.

Learn about us:



kpmg.com

The information contained herein is of a general nature and is not intended to address the circumstances of any particular individual or entity. Although we endeavor to provide accurate and timely information, there can be no guarantee that such information is accurate as of the date it is received or that it will continue to be accurate in the future. No one should act upon such information without appropriate professional advice after a thorough examination of the particular situation.

© 2024 KPMG LLP, a Delaware limited liability partnership and a member firm of the KPMG global organization of independent member firms affiliated with KPMG International Limited, a private English company limited by guarantee. All rights reserved. USCS009502-3T

The KPMG name and logo are trademarks used under license by the independent member firms of the KPMG global organization.