



Unlock efficiency in product labeling with KPMG AI LabelWise



Transform your life sciences labeling process - Powered by GenAI

In the Life Sciences industry, the complexity and critical nature of product labeling cannot be understated. Regulatory requirements vary significantly across global markets, making the labeling process cumbersome, time-consuming, and prone to error. Recognizing these challenges, KPMG has built a service offering and methodology with advanced technology accelerators designed to revolutionize your approach to product labeling, enabling efficiency, accuracy, and compliance on a global scale.

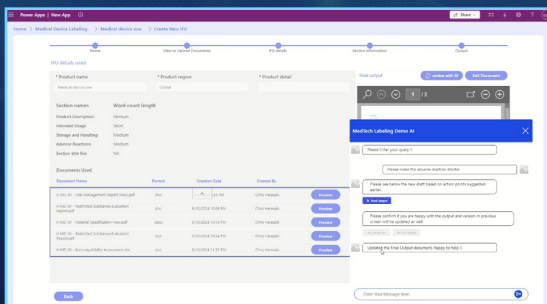
The challenge ahead

Life Sciences organizations face an uphill task in creating compliant, accurate product labeling. Traditional methodologies involve extensive cross-functional teams and can extend over months or even years, significantly delaying market entry and

escalating costs. Moreover, inaccuracies in labeling can lead to regulatory non-conformances, attracting heavy fines and potentially harming brand reputation.

KPMG AI Labelwise

The offering addresses our clients need to automate the most challenging components of the labeling creation process through ingesting data from various product documents and creating labeling for global jurisdictions. GenAI is leveraged for identifying missing information, overall content creation, proofreading and translations portions of the labeling process. The orchestration of the workflow can be built on any solution with a user interface.



Core benefits

- Automated Data Consolidation:** Streamlines the gathering and consolidation of diverse product documentation into a unified database.
- Intelligent Content Creation:** Utilizes GenAI for generating, verifying, and proofreading label content to ensure utmost accuracy and compliance.
- Rapid Translation Services:** Delivers efficient and precise translations, drastically reducing processing times.
- Customizable Workflow Management:** Offers integration with any low-code platform, enabling a user-friendly experience for managing the labeling process.

Why Choose KPMG AI LabelWise

- Efficiency and Speed:** Experience up to a 20-50% increase in operational efficiency and a 40-60% reduction in labeling lead time.
- Accuracy and Compliance:** Achieve up to a 90+% accuracy in Instruction for Use (IFU) content, significantly lowering the risk of non-conformances and quality issues.
- Efficient Integration:** The components of our offering configure into your existing tech stack, facilitating a smooth and rapid adoption.
- Adaptability:** Whether you seek to automate the entire labeling process or specific segments, our offering offers the flexibility to meet your unique needs.

Success in Action

A leading Medical Device manufacturer worked with KPMG to develop a business case that would leverage our offering to overcome fragmented and resource-intensive labeling processes. Senior leadership aligned on implementation of the offering which could drive up to \$40M in annual benefits for the company overall.

Work with KPMG

Embark on your journey towards labeling excellence with KPMG. It begins with a deep understanding of your needs, followed by a custom offering that includes environment setup, low-code platform development, business process reengineering, and extensive change management. Our commitment extends beyond implementation, providing ongoing support and solution maintenance.

Meet our team



Rajesh Misra

Principal, Advisory, Life Sciences Operations
617-988-1184
rkmisra@kpmg.com



Jordan Seiferas

Managing Director, Advisory, Data & Analytics
212-954-8563
jseiferas@kpmg.com



Arthur Franke

Director, Advisory, Data Scientist
212-872-3066
arthurfranke@kpmg.com

Some or all of the services described herein may not be permissible for KPMG audit clients and their affiliates or related entities.

Please visit us:



kpmg.com

The information contained herein is of a general nature and is not intended to address the circumstances of any particular individual or entity. Although we endeavor to provide accurate and timely information, there can be no guarantee that such information is accurate as of the date it is received or that it will continue to be accurate in the future. No one should act upon such information without appropriate professional advice after a thorough examination of the particular situation.

© 2024 KPMG LLP, a Delaware limited liability partnership and a member firm of the KPMG global organization of independent member firms affiliated with KPMG International Limited, a private English company limited by guarantee. All rights reserved.

The KPMG name and logo are trademarks used under license by the independent member firms of the KPMG global organization.

DASD-2025-16390