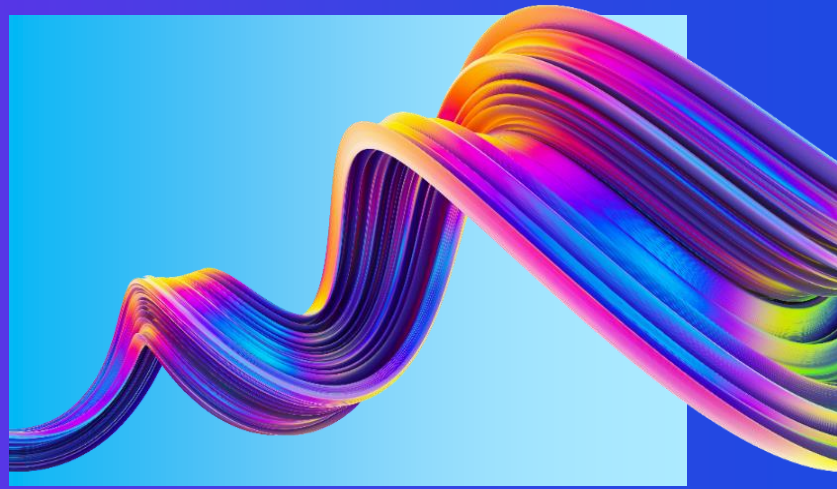




ORACLE

Redwood Migration Toolkit for Oracle Cloud HCM



Expedite your move to Oracle Cloud HCM Redwood

Do you need to Jump Start your move to Oracle Redwood?

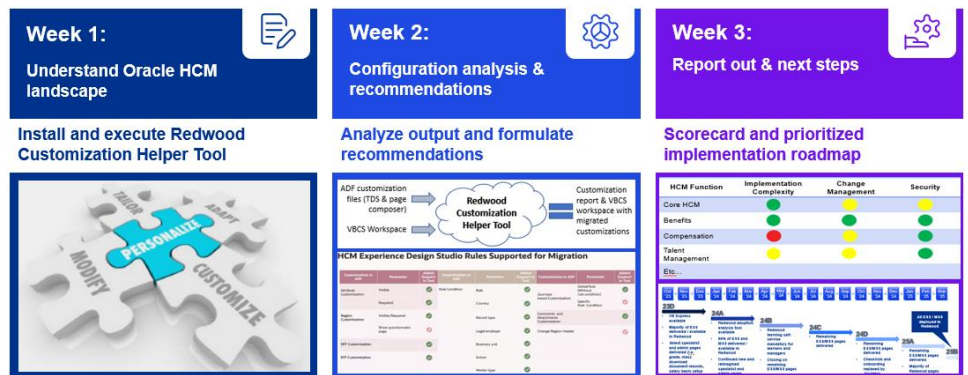
Oracle Redwood is the next generation of design and development systems, offering a transformative user experience. KPMG has developed the *Redwood Migration Toolkit for Oracle Cloud HCM*, a resource to facilitate a transition to Redwood, helping to enable organizations to leverage its intuitive design and intelligent features. The toolkit accelerates the migration process, providing a competitive edge by enhancing user productivity and streamlining workflows. Migrating to Redwood now minimizes adoption risks and aligns with Oracle's mandatory deadlines, making it an urgent priority for organizations aiming to optimize their human capital management strategies.

Why use the KPMG Toolkit?

KPMG helps you leverage Redwood's user experience to gain a competitive edge in human capital management. For example, over 200 new Redwood pages enhance user interaction and improve information consumption, driving better outcomes for your organization.

By deploying Redwood now, you can take advantage of this new functionality and benefit from the rollout of more features scheduled for quarterly release over the next year.

From a practical standpoint, starting now helps minimize your adoption and security risk as the mandatory deadline to adopt Redwood for self-service approaches. By understanding the impacts of the implementation across your Cloud HCM applications and designing your change management program today, you'll avoid the last-minute scramble and unforeseen blockers that can upend technology integrations at the 11th hour.



Three-week accelerator

Getting started doesn't have to be difficult. Use our three-week Redwood Migration Toolkit for Oracle Cloud HCM to jumpstart your journey to Redwood with a set of recommendations and implementation priorities customized for your Cloud HCM installation.

KPMG will prepare you with a repeatable process that aligns your adoption schedule to Oracle's quarterly releases while providing the flexibility to pick and choose which new features to integrate and support along the way.



KPMG and Oracle have a long-standing and successful alliance relationship, which has been further strengthened by the creation of the Oracle-KPMG Client Promise. This model doubles down on our already strong alignment to drive customer success on all our key accounts. KPMG and Oracle work together for one purpose—happy and successful customers!”

Gary Miller

Customer Success Officer and EVP
Oracle Customer Success Services

How KPMG supports Redwood adoption

Deploying Redwood isn't a one-off event. It's a continuous process of quarterly releases delivering new capabilities and enhanced functionality along the way.

The KPMG toolkit is designed to accelerate your journey to Redwood and support you throughout the entire release lifecycle. Customers using Cloud HCM should start planning and adopt Redwood incrementally, with the goal of achieving 100 percent employee and manager self-service adoption by the required adoption release.

We'll support you by working with you to describe your Oracle Cloud HCM footprint, assess the impact of Redwood on your Cloud HCM applications, explore the security and change management implications of Redwood adoption, and recommend new features, such as "nudges," Oracle Search, and VB Express, that can help you realize the fullest value from your Redwood implementation.

Some of these features are already available. Those waiting to implement Redwood are missing out on reimagined specialist and administrator pages, and in the coming months, Redwood users will have access to enhanced employee and manager self-service pages.

Start your Cloud HCM Redwood enablement journey now

The roadmap for Cloud HCM spans more than 12 months. Implement, test, and adopt changes as they are introduced as part of quarterly releases.

Adequately plan for prerequisites and upskill

Prerequisites and new features include "nudges", Oracle Search, VB Express, and the Redwood Customization Helper Tool. Upskill your team to take advantage of these capabilities.

Incorporate change management and training

Ensure your end user population is prepared for user interface and process changes introduced.

The key deliverables of our program include:

- A customized **Adoption Scorecard** to identify areas of challenge and opportunity in Redwood implementation.
- An **Implementation Roadmap** that provides transparency for and timing of steps in your adoption journey.
- **Knowledge transfer** to empower your organization as you integrate and incorporate Redwood into your workflows.

Published Oracle timeline for moving to Redwood as of November 2024



Contact us

Rich Isola
Principal, Advisory
risola@kpmg.com

Trisha Hastings
Managing Director, Advisory
thastings@kpmg.com

Gary Bogy
Managing Director, Advisory
gbogy@kpmg.com

Some or all of the services described herein may not be permissible for KPMG audit clients and their affiliates or related entities.

Learn about us:



[kpmg.com](https://www.kpmg.com)

The information contained herein is of a general nature and is not intended to address the circumstances of any particular individual or entity. Although we endeavor to provide accurate and timely information, there can be no guarantee that such information is accurate as of the date it is received or that it will continue to be accurate in the future. No one should act upon such information without appropriate professional advice after a thorough examination of the particular situation.

© 2024 KPMG LLP, a Delaware limited liability partnership and a member firm of the KPMG global organization of independent member firms affiliated with KPMG International Limited, a private English company limited by guarantee. All rights reserved. USCS023020-1A

The KPMG name and logo are trademarks used under license by the independent member firms of the KPMG global organization.