



# KPMG **Asset** **Management** **Platform**

## Private Equity

Pioneering the automation of tax compliance and planning with innovative technology

[kpmg.com](https://kpmg.com)





# The demands on the chief tax officer are growing

and now technology is available to assist and enable significant improvements.

The KPMG Asset Management Platform is a leading technology that can help you reimagine cost-effective, innovative ways to execute tax compliance and planning. Informed by our extensive, in-depth tax knowledge of pass-through structures, our Asset Management Platform enables efficiency and transparency, and helps normalize big data so you can save time, improve accuracy, and discover new tax value-adds for your organization:

- Complete transparency into the status of tax deliverables and the capability to drill-down into calculations (not a black box)
- Reduced risk of missing tax compliance and investor reporting deadlines
- Increased operational efficiencies across all aspects of tax compliance (data collection, updating investor/tax info, creating reports, and tax filings)
- Shared access for client, KPMG, and authorized third parties
- Reduced rework time and enhanced reporting derived from one tax technology platform supporting all major asset classes for both federal and state
- Improved decision support enabled by scenario planning, modeling, estimates, and data analytics
- Removal of constraints on business growth and profitability by replacing manual processes and legacy systems.

For additional information including a demonstration of KPMG's Asset Management Platform, take a tour of our interactive website at [visit.kpmg.us/AMP](https://visit.kpmg.us/AMP). For insights from our Asset Management practice, visit us at [home.kpmg/us](https://home.kpmg/us).

# Dive into the Asset Management Platform

## Data Automation Center

Automate Inflows

Financial Data

Portfolio  
Company Data

Investor Data



## Private Equity Specifics

- Integrated waterfall allocation models
- Deal-specific and/or special allocations
- Automated K-1/K-3 scanning and aggregation of K-1/K-3 pickups, including footnotes
- Customizable workflow for the collection of K-1/K-3 pickups and other documents from third parties
- Book and tax basis tracking of investments
- Integration with fund administrators for automated consumption and validation of book data

## Asset Management Platform® | Key Features

- Automated consumption of book data
- Data mapping/validations
- Book to tax walk
- Investment and basis tracking
- Allocations & Tiering
- State withholding & composites
- Federal & State Tax Returns
- Schedules K-1/K-2/K-3
- US Withholding (1042/1042-S)
- Dynamic report writer
- Structure charts
- Full Client Access

### Data analytics

- What-if scenarios & planning
- Estimates & data visualizations

### Workflow/collaboration

- Milestones & resources
- Shared document workpapers
- Investor Portal

### Compliance & investor deliverables

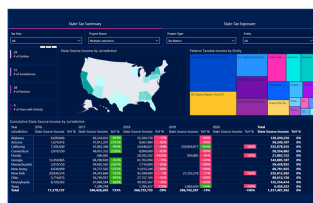
- Tax reports & calculations
- Tax Return, K-1 and K-3 Packages
- Investor estimate letters

### Tax Return Software

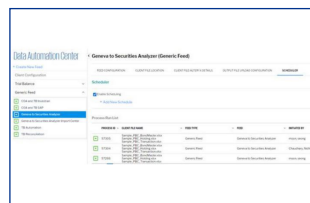
- Integrated mapping with GoRS/CCH
- Federal, State & Local forms
- Electronic filing

### What-if scenario planning

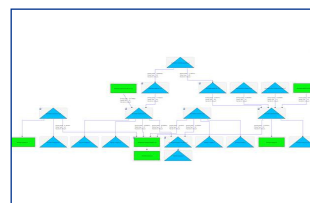
### Business intelligence



### Data Automation



### Multilevel tiering and complex allocations



Private Equity, Hedge, Real Estate, Funds of Funds, RICs, Energy, Credit, Infrastructure, Family Office, REIT, Operating Partnerships

For additional information including a demonstration of the KPMG Asset Management Platform, take a tour of our interactive website at [visit.kpmg.us/AMP](http://visit.kpmg.us/AMP). For insights from our Asset Management practice, visit us at [home.kpmg/us](http://home.kpmg/us).

## Metrics that matter

The KPMG Asset Management Platform offers established performance and a depth of client engagement.



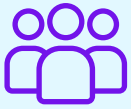
**2,602**

Total clients



**47K+**

Entities



**3,400**

External users



**\$247M**

Investment to date



Over **40M**

K-1s generated  
in 2023



**10 years**

serving funds



## Our people serving you

The KPMG Asset Management Platform, coupled with our tax experience serving partnerships, RICs, and REITs and executing consistent processes, can help keep your compliance, planning, and reporting on track.

The partners and professionals of our Asset Management Services practice have extensive experience helping numerous partnership, RIC, and REIT structures overcome their unique tax challenges. Working with our State and Local and Washington National Tax teams, we help you realize tax advantages and maintain compliance by adding clarity through:

- Modeling
- Transactions
- Entity formation structuring
- Tax planning
- Legislative and regulatory developments.

As part of the delivery model, a member of the tax technology team will be available to you throughout the transition planning, client onboarding, and service stages. Some of the key tasks that will be performed during your onboarding include:

- Understanding your current process, data, and systems
- Identifying key milestones to track
- Reviewing and importing your investor and entity data
- Reviewing system-generated fund/organization charts for accuracy
- Tailoring reports to serve your management team and investor demands.

# KPMG Asset Management Platform provides:

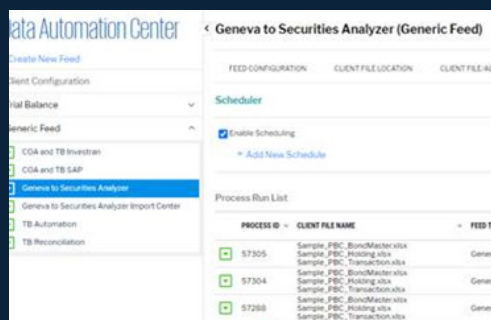
## What-if scenario planning

| Greenville Capital Fund I LP 2018 Estimate to Tax Return Summary |                          |                    |                      | Estimate/Hypothetical    |                    |                      |          |
|--|--------------------------|--------------------|----------------------|--------------------------|--------------------|----------------------|----------|
| Partner  | Ordinary / Rental Income | Capital Gains/Loss | Total Taxable Income | Ordinary / Rental Income | Capital Gains/Loss | Total Taxable Income | Variance |
| Flow LP  | 2,814,124                | 203,132            | 3,017,256            | 2,814,124                | 203,132            | 3,017,256            | 0        |
| Greenville Capital Fund Member LP                                | 39,070,700               | 1,279,134          | 40,349,834           | 39,070,700               | 1,279,134          | 40,349,834           | 0        |
| Greenville Capital LP LP   | 44,533,528               | 1,300,302          | 45,833,830           | 44,533,528               | 1,300,302          | 45,833,830           | 0        |
| LP LP  | 24,004,920               | 767,042            | 24,771,962           | 24,004,920               | 767,042            | 24,771,962           | 0        |
| LP LP  | 10,000,280               | 311,016            | 10,311,296           | 10,000,280               | 311,016            | 10,311,296           | 0        |
| One LP   | 10,000,280               | 311,016            | 10,311,296           | 10,000,280               | 311,016            | 10,311,296           | 0        |
| Two LP   | 10,000,280               | 311,016            | 10,311,296           | 10,000,280               | 311,016            | 10,311,296           | 0        |
| Three LP   | 10,000,280               | 311,016            | 10,311,296           | 10,000,280               | 311,016            | 10,311,296           | 0        |
| Total  | 101,400,092              | 4,395,744          | 105,795,836          | 101,400,092              | 4,395,744          | 105,795,836          | 0        |

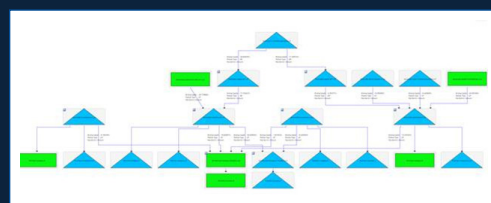
## Business intelligence



## Data Automation



## Multilevel tiering and complex allocations



## Contact us

**Ricky Rahaman**  
**Tax Sector Leader, Private Equity**  
**T:** 212-954-7227  
**E:** rickyrahaman@kpmg.com

**Charles Ferentinos**  
**Partner, Tax**  
**T:** 201-307-8093  
**E:** cferentinos@kpmg.com

**Ryan Murphy**  
**Principal, Tax**  
**T:** 484-557-6799  
**E:** rmurphy@kpmg.com

Some or all of the services described herein may not be permissible for KPMG audit clients and their affiliates or related entities.

Learn about us:



[kpmg.com](https://www.kpmg.com)

The information contained herein is of a general nature and is not intended to address the circumstances of any particular individual or entity. Although we endeavor to provide accurate and timely information, there can be no guarantee that such information is accurate as of the date it is received or that it will continue to be accurate in the future. No one should act upon such information without appropriate professional advice after a thorough examination of the particular situation.

© 2024 KPMG LLP, a Delaware limited liability partnership and a member firm of the KPMG global organization of independent member firms affiliated with KPMG International Limited, a private English company limited by guarantee. All rights reserved. The KPMG name and logo are trademarks used under license by the independent member firms of the KPMG global organization. USCS015082-1C