



Ideas and Insights

Ideas and Insights brings you our take on the news affecting your business now. It's valuable information in a format you can use.

In this issue: Risk management transformation, opportunities in M&A, the big challenges facing banks, the new compliance landscape, and more.

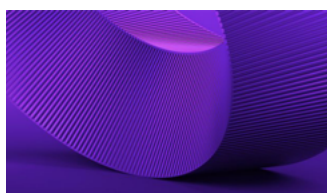
August

WEBCASTS



Risk management transformation comes alive

Join us for our latest Risk Factors webcast, where KPMG professionals will explore the latest trends in risk management. Let best practices and smart strategies smooth your transition to new ways of working. Don't miss it. [New ways of working in Risk](#) (kpmg.com)



Take a deep dive into the IPO, M&A and VC markets

Our semiannual survey of the IPO and M&A markets uncovers opportunities and identifies pitfalls. In light of the year's first six months, our professionals discuss their expectations for the remainder of 2024. The beneficiary is you. [Semiannual IPO and M&A Webcast](#) (kpmg.com)



C-suite shows growing enthusiasm for GenAI

The latest KPNG AI & Digital Innovation Quarterly Pulse Survey found that 80% of C-suite and business leaders recognize GenAI as an important factor in gaining both market share and competitive advantage. See how it's changing their organizations. [KPMG LLP AI & Digital Innovation Quarter Pulse Survey—Q2 2024](#)

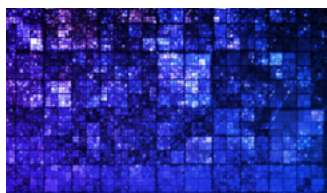
FINANCE



The big challenges facing Chief Risk Officers

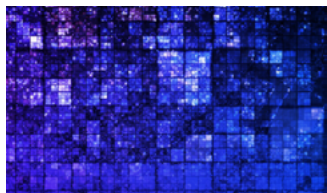
We asked CROs to cite their top priorities and challenges. Cybersecurity threats and data breaches topped the list, but our survey surfaced many more. See how they're preparing to deal with the issues, and how you can, too. [Chief Risk Officer insights in Financial Services](#) (sharepoint.com)

TAX



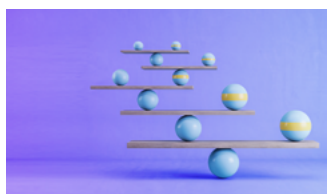
Webcast: Share-based compensation insights

Join professionals from the KPMG Global Reward Services practice, GEO, and Rutgers University as they share insights from—and implications of—Global Equity Organization's (GEO) new Global Share Plans Study. [Webcast: Share-Based Compensation: Insights from GEO Global Share Plans Ranking Study](#)



Webcast series: Quarterly Bank Tax Update

Stay on top of key issues impacting bank tax departments with the TaxWatch Banking Update webcast series. It's the source for informed perspectives on your most complex challenges. Register now. [Register for Webcast: Quarterly Bank Tax Update](#)



Podcast: Charting the course of employer-provided aircraft tax implications

In this episode of In the Vault with KPMG, we discuss the IRS's new audit campaign and navigate the intricate tax implications of employer-provided aircrafts for banks. [Charting the Course of Employer-Provided Aircraft Tax Implications](#)

Learn about us:



[kpmg.com](#)