



# KPMG AI Code Assist

## GenAI App Migration: Accelerating speed to modern platforms with KPMG AI Code Assist

### Application modernization today

Legacy applications can hold organizations back from realizing their full potential, which is why modernizing them is necessary. However, several barriers or challenges can present themselves throughout the process:

- Hesitation due to lengthy and complex digital transformation
- Shortage of skilled talent for development and implementation
- Apprehension about costs in modernization process
- Concerns over evolving regulatory landscape
- Security concerns and vulnerabilities during transition
- Resistance to organizational change and adaptation

Despite these challenges, organizations recognize that modernization is essential to remain competitive and agile in today's ever-evolving business environment. Recent industry trends indicate that 92% of organizations plan to or are currently modernizing their applications; however, most struggle with where to begin. KPMG LLP's experience in digital transformation can help companies streamline processes, increase efficiency, and boost productivity, all of which can position them for future success.

**92%** of organizations plan to or are currently modernizing their apps\*

**28%** of organizations want to modernize, but many don't know where to begin

**8%** don't plan to modernize at all

**28%** plan to modernize, but not started

**16%** have just started

**34%** have made moderate progress

**14%** have made significant progress

\*Wakefield Report 2022 – Why App Modernization Projects Fail, n =837

### Benefits of modern apps

Speed to market

Lower technology costs

Improved security posture

Scalability and resiliency

Enhanced user experience

Simplify technology landscape

### Accelerating modernization with GenAI

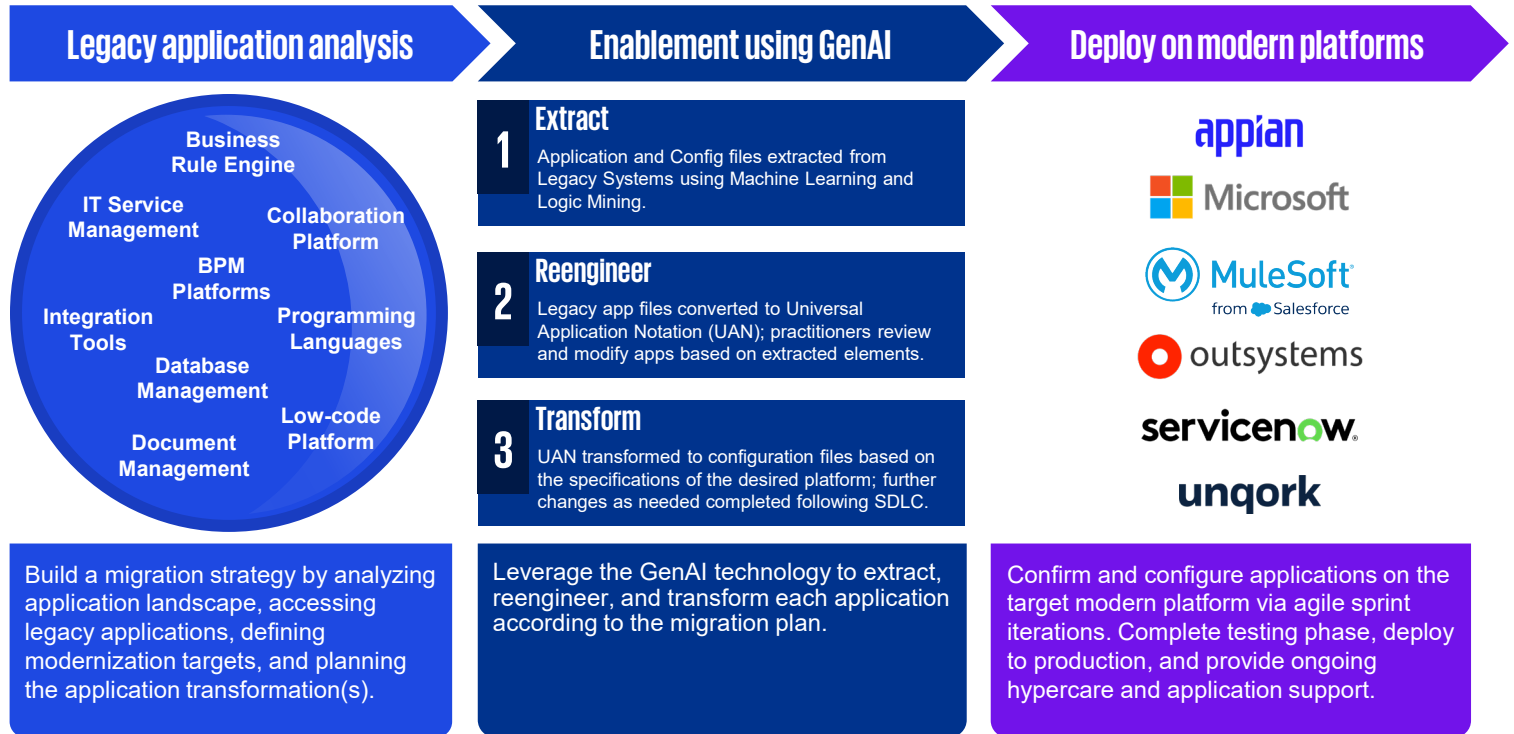
KPMG leverages an advanced GenAI technology that extracts business requirements from your legacy applications and helps transform them into modern low and no-code solutions. The technology enables accelerated application discovery, re-engineering, and development, which significantly reduces the cost, time and risk to application development and migration.

In addition to this technology, we leverage an integrated suite of assets, automation, and tools, backed by our business expertise and alliances. Our capabilities support the end-to-end application lifecycle, which include program management, change management, risk management, data migration, low-code implementation, and cybersecurity.

Our methodology and experience, coupled with our strategic alliances, makes KPMG a leader in application modernization.

# KPMG application modernization methodology

Our approach to managing programs for application migration covers activities beginning with legacy application discovery and continuing through implementation, go-live, and post-implementation support.



## Success

An HR legacy application, built on .NET/SQL, needed to be modernized. The goal of the modernization was to transition the legacy application to the ServiceNow platform, while minimizing development time, effort, and cost. By working with KPMG and leveraging Code Assist automation capabilities, developers estimated reductions of development effort of up to 25-30% in the areas of scope for Code Assist. The tool produced about 10-20% of development effort for creating workflows and 60-80% of development effort for creating tables and roles. KPMG enabled a transition to ServiceNow to remove technical debt, improve user experience, and increase efficiencies in development speed.



Check out our Generative AI website for further information on how KPMG can accelerate your **value** to delivery.

## Contact us to set up an initial discovery session!



**Mike Harper**

[mcharper@kpmg.com](mailto:mcharper@kpmg.com)



**Jill Dolgin**

[jeepstein@kpmg.com](mailto:jeepstein@kpmg.com)



**Daryl Fink**

[darylfink@kpmg.com](mailto:darylfink@kpmg.com)

Project performance and security gains as noted are representative samples based on observation in KPMG clients and are not intended as guarantees.

The information contained herein is of a general nature and is not intended to address the circumstances of any particular individual or entity. Although we endeavor to provide accurate and timely information, there can be no guarantee that such information is accurate as of the date it is received or that it will continue to be accurate in the future. No one should act upon such information without appropriate professional advice after a thorough examination of the particular situation.

**Some or all of the services described herein may not be permissible for KPMG audit clients and their affiliates or related entities.**

©2024 KPMG LLP, a Delaware limited liability partnership and a member firm of the KPMG global organization of independent member firms affiliated with KPMG International Limited, a private English company limited by guarantee. All rights reserved. USCS012591-1A

The KPMG name and logo are trademarks used under license by the independent member firms of the KPMG global organization.