



Digitally-enabled technology architecture

KPMG Connected Enterprise for Energy, Natural Resources & Chemicals (ENRC)

The Connected Enterprise designs and engineers intelligent digital services, technologies, and platforms. It enables ENRC companies to meet customer expectations in an agile, cost-effective and scalable manner while maintaining organizational security. It lets you create an experience-centric business while it delivers operational savings.



Disruptions in the ENRC sector are changing the way customers want to interact with your business and bringing new challengers to your market. To compete effectively, you must change to meet the times, using cloud-based technology to become more agile and more responsive. With greater knowledge, you can identify best to put your efforts. With the right tools, you can tap into the enormous potential of digital transformation. We bring experience, technology and a strong history. Let us help you on your journey.



Add value by orchestrating operations into a connected system that increases efficiency, reduces cost and protects margins and profitability. See how Connected Enterprise incorporates specific blueprints to manage change for the ENRC sector.

Disclaimer: Some or all of the services described herein may not be permissible for KPMG audit clients and their affiliates or related entities.

© 2024 KPMG LLP, a Delaware limited liability partnership and a member firm of the KPMG global organization of independent member firms affiliated with KPMG International Limited, a private English company limited by guarantee. All rights reserved.



Key considerations

- Is your organization designed to be flexible and agile?
- How can you optimize the integration of various technologies to support high performance?
- How can you automate business and technology processes to respond to customer needs more effectively?
- Is the necessary security in place to protect your data, systems and products?



How KPMG can help

- Planning and creating the best operating model for your business, your people and your technology investment
- Pre-configuring processes and technologies, customized to your business, to get you started faster
- Reducing the risks and challenges of digital transformation, drawing on our extensive experience in technology implementation
- Customer-centric digital architectures that integrate new digital platforms with legacy systems for a better employee experience

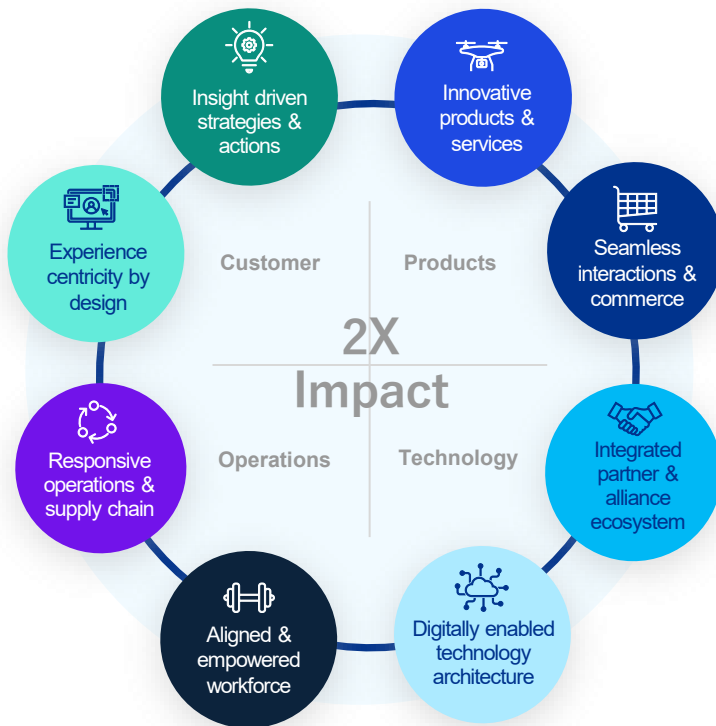
Getting beyond the regulatory complexities

As it acquired a diverse group of companies, each with its own legacy systems, a major medical device manufacturer struggled to find a sustainable, efficient approach to certain regulatory activities. KPMG helped the company implement a three-part digital transformation, including a Product Information Management system to track product master data for compliance reporting, a Regulatory Information Management system to house license data, and a labeling solution with electronic Instructions for Use to publish on the company's website. By creating these three solutions, KPMG updated the manufacturer's technology infrastructure, improving the acquisition-integration process and enabling a more accurate, less manual regulatory process.

We deliver results that matter.

What does a Connected Enterprise look like?

The most successful organizations exhibit eight characteristics that span all aspects of the enterprise. The capabilities of front office, middle office and back office integrate seamlessly to support your brands, products and services, interactions and workforce.



Make the connection



Generate business value at every stage of your transformation journey



Build an insights-driven, digital and customer centric business



Empower and enable your people to align the organization for agility and performance



Engineer secure architectures to enable agile, high-speed innovation

Contact us



Rick Rose
Principal, Commercial Lead
KPMG LLP
T: 267-256-2759
E: emrose@kpmg.com



Bradley Stansberry
Partner, Advisory
Energy and Chemicals Industry
Consulting Lead
T: 214-840-6026
E: bstansberry@kpmg.com

Some or all of the services described herein may not be permissible for KPMG audit clients and their affiliates or related entities.

kpmg.com/socialmedia



The information contained herein is of a general nature and is not intended to address the circumstances of any particular individual or entity. Although we endeavor to provide accurate and timely information, there can be no guarantee that such information is accurate as of the date it is received or that it will continue to be accurate in the future. No one should act upon such information without appropriate professional advice after a thorough examination of the particular situation.

© 2024 KPMG LLP, a Delaware limited liability partnership and a member firm of the KPMG global organization of independent member firms affiliated with KPMG International Limited, a private English company limited by guarantee. All rights reserved.

The KPMG name and logo are trademarks used under license by the independent member firms of the KPMG global organization.