



Digitally-enabled technology architecture

KPMG Connected Enterprise for Life Sciences

The Connected Enterprise designs and engineers intelligent digital services, technologies, and platforms that enable life science companies to deliver on the customer promise in an agile, cost-effective and scalable manner while maintaining security. It lets you create an experience-centric business while delivering operational savings.



» In the life sciences sector, disruption is everywhere. It's changing the way customers want to interact with your business and encouraging new challengers to enter your market. With cloud-based technology, you can become more agile and respond more quickly to challenges, while identifying where best to focus your efforts to gain the most value. With the right tools, you can tap into the enormous potential of the cloud and digital transformation.

» Add value by orchestrating operations into a connected system that increases efficiency, reduces cost and protects margins and profitability. Connected Enterprise incorporates specific blueprints to manage change in life sciences.



Key considerations

- Is your organization designed to be flexible and agile?
- How can you optimize the integration of various technologies to support high performance?
- How can you automate business and technology processes to respond to customer needs more effectively?
- Is the necessary security in place to protect your data, systems and products?



How KPMG can help

- Planning and creating the best operating model for your business, your people and your technology investment
- Pre-configuring processes and technologies, customized to your business, to get you started faster
- Reducing the risks and challenges of digital transformation, drawing on our extensive experience in technology implementation
- Customer-centric digital architectures that integrate new digital platforms with legacy systems for a better employee experience

Disclaimer: Some or all of the services described herein may not be permissible for KPMG audit clients and their affiliates or related entities.

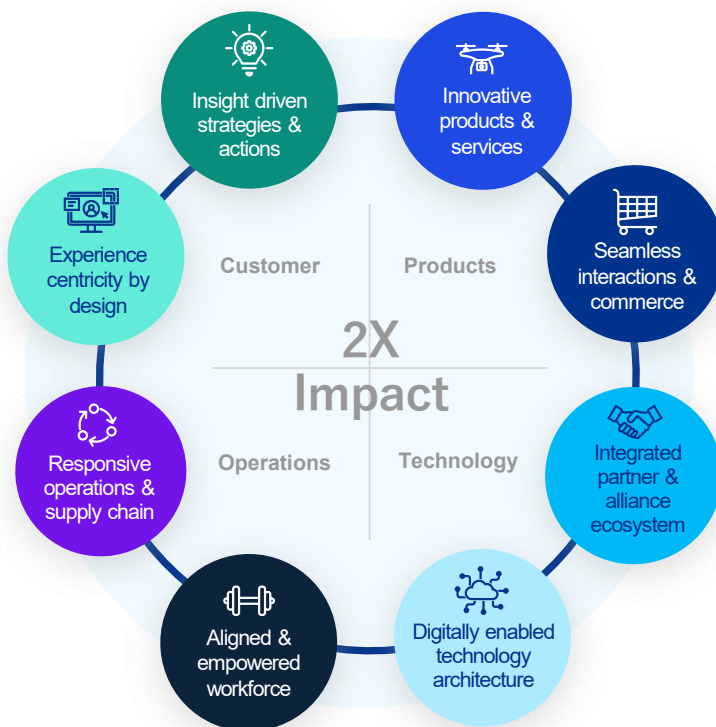
Getting beyond the regulatory complexities

As it acquired a diverse group of companies, each with its own legacy systems, a major medical device manufacturer struggled to find a sustainable, efficient approach to certain regulatory activities. KPMG helped the company implement a three-part digital transformation, including a Product Information Management system to track product master data for compliance reporting, a Regulatory Information Management system to house license data, and a labeling solution with electronic Instructions for Use to publish on the company's website. By creating these three solutions, KPMG updated the manufacturer's technology infrastructure, improving the acquisition-integration process and enabling a more accurate, less manual regulatory process.

We deliver the results that matter.

What does a Connected Enterprise look like?

The most successful organizations exhibit eight characteristics that span all aspects of the enterprise. The capabilities of front office, middle office and back office integrate seamlessly to support your brands, products and services, interactions and workforce.



Make the connection



Generate business value at every stage of your transformation journey



Build an insights-driven, digital and customer centric business



Empower and enable your people to align the organization for agility and performance



Engineer secure architectures to enable agile, high-speed innovation

Contact us



Dipan Karumsi
Principal, Advisory
Procurement & Outsourcing Adv
KPMG LLP
T: 614-249-2384
E: dkarumsi@kpmg.com



Michael Ricci
Managing Director, Advisory
C&O Commercial
KPMG LLP
T: 484-252-6705
E: michaelricci@kpmg.com



Rick Rose
U.S. Lead, Connected
Enterprise, Commercial
KPMG LLP
T: 267-256-2759
E: emrose@kpmg.com

Some or all of the services described herein may not be permissible for KPMG audit clients and their affiliates or related entities.

Learn about us:



[kpmg.com](https://www.kpmg.com)

The information contained herein is of a general nature and is not intended to address the circumstances of any particular individual or entity. Although we endeavor to provide accurate and timely information, there can be no guarantee that such information is accurate as of the date it is received or that it will continue to be accurate in the future. No one should act upon such information without appropriate professional advice after a thorough examination of the particular situation.

© 2024 KPMG LLP, a Delaware limited liability partnership and a member firm of the KPMG global organization of independent member firms affiliated with KPMG International Limited, a private English company limited by guarantee. All rights reserved. USCS011362-1G

The KPMG name and logo are trademarks used under license by the independent member firms of the KPMG global organization.