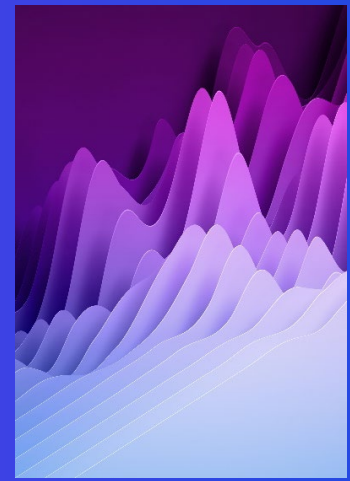




Customer-centric supply

KPMG Powered Enterprise | Supply Chain

enabled by Oracle



To disrupt you must transform

71%¹ of CEOs plan to radically transform their organization’s operating model and more than half say that acting with agility is the new currency of business. COOs have a pivotal role to play in how the organization, its suppliers and its people respond.

What you might be thinking about

- Is my supply chain initiative focused on customer experience metrics?
- Does my end-to-end supply chain function as one virtual organization?
- Can I see my total demand and supply picture at any point in time?
- How quickly can I identify and respond to a potential supply continuity issue?
- Are product movements driven by actual demand or by forecasted demand?

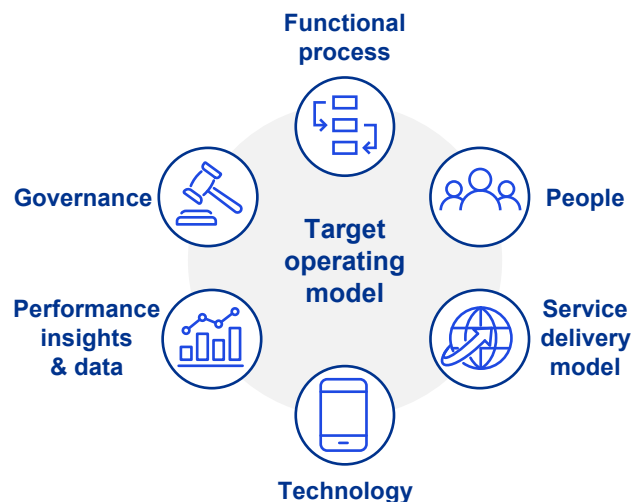
KPMG teams understand the human factors involved in business transformation, so we can help inspire and empower your people to embrace change, as you move forward to align your transformation with industry disruption.

Powered Supply Chain enabled by Oracle is the outcome-driven transformation solution that prepares your business for the future.

A pre-configured Oracle solution, embedded with years of leading practice and enhanced with robotic process automation, it enables you to quickly transform and derive maximum value from your move to the cloud.

An accelerator for business transformation

At the heart of KPMG Powered Supply Chain Management (SCM) is a pre-built target operating model that complements Oracle SCM Cloud.



It’s not what you put into the cloud that matters, but what you get out of it

- A jump start to your digital transformation
- Immediate access to leading practices and processes
- Validated solutions with proven real-world usability
- Reduced implementation risks and enhanced ROI
- High-touch change management and employee experience
- A solid platform for continuing evolution and progress

“ Powered enables us to see the future, relate it to what we have today and move forward with leading practice

– A multinational hospital

“ KPMG was a perfect fit for us, bringing the tools and experience necessary for us to make a complete and smooth transition to the cloud.

– A US building material company

1. KPMG CEO Outlook Survey, KPMG International, 2018

What's in the box?

Powered Supply Chain provides a formidable combination of leading practices and processes, proven technology solutions and a next-generation delivery framework.

- The **Powered operating model** shapes how transformation plays through every layer of your organization;
- The **Powered execution suite** is an integrated platform of next generation tools to help deliver that transformation;
- And **Powered managed services** with access to specialized resources, managing cost and predictability

The Powered operating model



Source: KPMG International, 2018

Imagine...

Increase investment in cloud services in

1-3
years

An enterprise wide digital strategy up by

52% in three years

Going beyond efficiency gains

Powered SCM enabled by Oracle is focused on the future agility of your business. It includes and reaches beyond efficiency gains from traditional supply chain-related tasks by using automation, predictive analytics and cognitive learning to extend the role of supply chain management - this is a legacy you won't need to discard in five years' time.

Seeing is believing with Powered Supply Chain.

Learn about us:



[kpmg.com](https://www.kpmg.com)

Some or all of the services described herein may not be permissible for KPMG audit clients and their affiliates or related entities.

With KPMG Powered Supply Chain enabled by Oracle

- Transform the way you run your business
- Build agile functions that evolve as you grow
- Help your people to adopt and embrace change
- Exploit new technologies for value and performance
- Drive future success with the latest leading practice



- KPMG is a leader in Oracle Cloud solutions
- More than 2,600 Oracle professionals in more than 44 countries
- 1,000+ successful engagements with more than 100+ Oracle Cloud deployments
- 27 year relationship and Oracle Cloud Elite partner
- 25 Oracle Specializations and Advanced Specializations
- 17 Oracle Excellence Awards over last three years – EPM Global and NA Partner of the Year 2018

To find out more about Powered Supply Chain enabled by Oracle and the impact it can have on your business visit kpmg.com/us/powerenterprise

What comes next is powered by KPMG.

To find out more about Powered Enterprise, please contact:

Linsey Ryan

US Oracle Practice Leader
KPMG in the US

linseyryan@kpmg.com

224-623-4091

Mary Rollman

Principal Supply Chain Leader
KPMG in the US

maryrollman@kpmg.com

312-618-9863

The information contained herein is of a general nature and is not intended to address the circumstances of any particular individual or entity. Although we endeavor to provide accurate and timely information, there can be no guarantee that such information is accurate as of the date it is received or that it will continue to be accurate in the future. No one should act upon such information without appropriate professional advice after a thorough examination of the particular situation.

© 2024 KPMG LLP, a Delaware limited liability partnership and a member firm of the KPMG global organization of independent member firms affiliated with KPMG International Limited, a private English company limited by guarantee. All rights reserved. USCS023298-1A

The KPMG name and logo are trademarks used under license by the independent member firms of the KPMG global organization.