



Aligned & empowered workforce

KPMG Connected Enterprise for Energy, Natural Resources & Chemicals (ENRC)

The pace of industry change has never been faster. With new technologies, new competitors and new challenges, an agile, motivated workforce is essential. A Connected Enterprise is able to respond quickly and effectively to changes in the ENRC sector, empowering teams to embrace innovation and leading to recruitment and retention success.



Key considerations

- How do we foster an innovative, forward-looking culture?
- How can we model and incentivize flexibility?
- What skills and training do our employees need?
- How can we attract and retain the right digital and entrepreneurial talent?



How KPMG can help

- Building a coherent, pragmatic, customer focused people strategy
- Aligning key stakeholders and employees in support of the business transformation, and helping you communicate the benefits
- Coordinating processes such as recruitment and talent management to reflect your customer-centric goals

» By providing greater visibility into value chain data, a Connected Enterprise aligns employees in delivering better customer experiences across the ENRC ecosystem. This helps you build an agile culture, with an empowered workforce that challenges old ways of thinking and puts the customer experience at the center of your organization.

» As difficult as it can be to find talent, it can be equally difficult to keep it. As a Connected Enterprise, with the right experiences and capabilities, you can attract and retain individuals with the talent and skills you need now and for the future. You can build teams of adaptable, innovative employees who will consistently drive growth and add value.

Disclaimer: Some or all of the services described herein may not be permissible for KPMG audit clients and their affiliates or related entities.

Learning to make people better

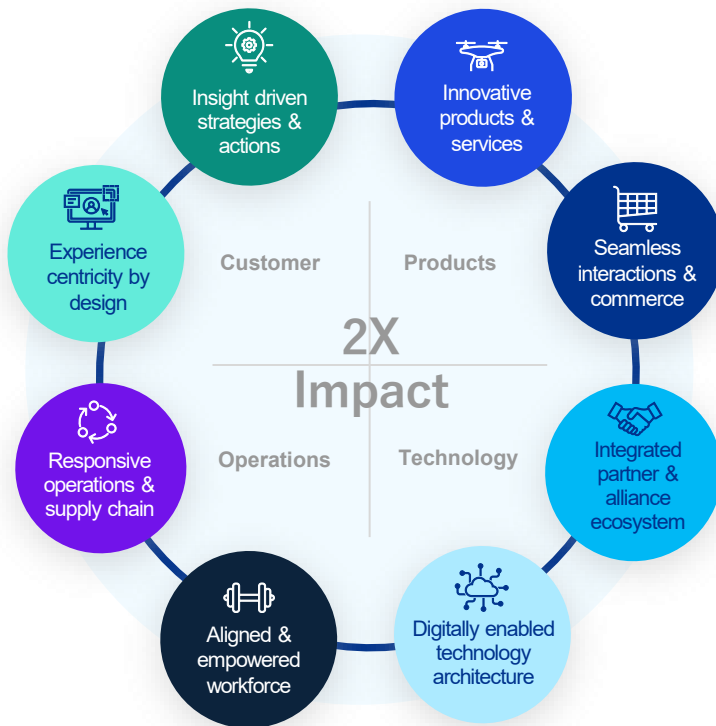
A KPMG member firm led an international consortium of experts to create two of the largest and most innovative leadership development programs in the world, involving patients in the design and delivery of content. This initiative is having clear and continuing impact on the quality of front-line patient care.

The complexities and dilemmas involved in the management of modern healthcare present some of the most difficult challenges facing our society. This project clearly illustrates what can be achieved by multi-disciplinary teams working together for a clear and shared purpose.

We deliver results that matter.

What does a Connected Enterprise look like?

The most successful organizations exhibit eight characteristics that span all aspects of the enterprise. The capabilities of front office, middle office and back office integrate seamlessly to support the brands, products and services, interactions and workforce.



Make the connection



Generate business value at every stage of your transformation journey



Build an insights-driven, digital and customer centric business



Empower and enable your people to align the organization for agility and performance



Engineer secure architectures to enable agile, high-speed innovation

Contact us



Rick Rose
Principal, Commercial Lead
KPMG LLP
T: 267-256-2759
E: emrose@kpmg.com



Bradley Stansberry
Partner, Advisory
Energy and Chemicals Industry
Consulting Lead
T: 214-840-6026
E: bstansberry@kpmg.com

Some or all of the services described herein may not be permissible for KPMG audit clients and their affiliates or related entities.

kpmg.com/socialmedia



The information contained herein is of a general nature and is not intended to address the circumstances of any particular individual or entity. Although we endeavor to provide accurate and timely information, there can be no guarantee that such information is accurate as of the date it is received or that it will continue to be accurate in the future. No one should act upon such information without appropriate professional advice after a thorough examination of the particular situation.

© 2024 KPMG LLP, a Delaware limited liability partnership and a member firm of the KPMG global organization of independent member firms affiliated with KPMG International Limited, a private English company limited by guarantee. All rights reserved.

The KPMG name and logo are trademarks used under license by the independent member firms of the KPMG global organization.