



The Asset Management Reporting Suite – *powered by AMP*

Reimagining your reporting needs



The KPMG Asset Management Platform (AMP) is a leading-edge technology solution designed to power your asset management reporting needs. Our practitioners specialize in providing an ongoing managed service that fits your unique reporting requirements, allowing you to dedicate your valuable time and resources to the growth and enhancement of your core business functions.

Our Asset Management Platform powers the following reporting modules and features:

AMP – Reporting suite powers:



Fund accounting & reporting



Tax compliance & reporting



Regulatory compliance & reporting



Fund accounting, reporting & oversight

- Annual Fund financials
- Quarterly Investor Statements
- General Ledger reporting
- NAV reconciliation assistance
- Management fee calculations
- Position & cash reconciliation



Tax compliance & reporting

- Form 1099 & NRA tax reports and calcs
- Tax Returns & K-1 packages
- Book & Tax Basis investment tracking
- Book to Tax Walk
- Allocations & tiering
- State Withholding & composites
- Tax Reclamation
- FATCA Reporting
- Common Reporting Standard Reporting



Regulatory compliance & reporting

- Form PF reporting*
- Form ADV filing*
- AIFMD Report
- PRIIPS KID
- UCITS KID
- MMF Report
- MiFID Reports
- EET/SFDR Reports

*in beta stage

Data automation with fund administrators



Extract and transform data for multiple funds from client systems to compute periodic estimates and other investor and/or audit requirements.

Planning and decision making

Integrated allocation modules expedite decision-making. Prepare estimates, what-if scenarios, and generate tax insights for your investors.



Dive into the Asset Management Platform

Data Automation Center

Automate inflows



Financial data



Market data



Investor data

Calculation spotlights

Management & performance fee calculations including fees on a commitment, cost, or NAV basis and support for layered hurdles.

Automated K-1/K-3 scanning and aggregation of K-1/K-3 pickups, including footnotes.

Prepopulated Form PF fields with KPMG guidance on regulatory updates and priorities.

Asset Management Platform key features

- Automated consumption of TPA data
- Data mapping/validations
- Proactive data error flags
- Investment and basis tracking
- Allocations & tiering
- Extensive & evolving data dictionary
- Federal & State Tax Returns
- Schedules K-1/K-2/K-3
- NAV and mgt fee calcs
- Form PF and ADV
- Dynamic report writer
- Report markups
- Report submissions

Data analytics

- What-if scenarios and planning
- Estimates and data visualizations

Workflow/collaboration

- Milestones & resources
- Shared document workpapers
- Investor and Partner Portals

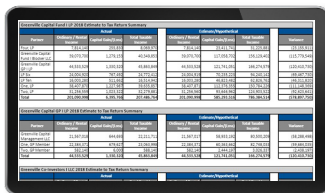
Review/submission

- Demonstrate recons across reports
- Client owner review and confirmation
- Cohesive submission interface

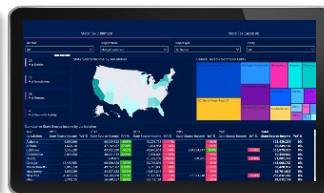
Additional insights

- Visualization of reporting data
- Automated logic checks and error flags
- Suggestions for reporting optimization

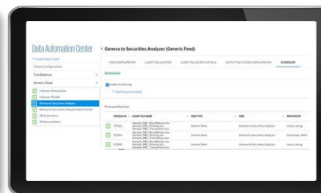
What-if scenario planning



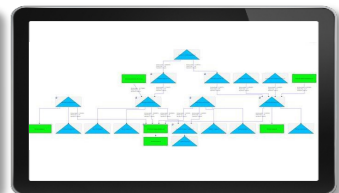
Business intelligence



Data automation



Multilevel tiering and complex allocations



Private Equity | Hedge | Real Estate | Funds of Funds | RICs | Energy | Credit | Infrastructure | Family Office | REIT | Operating Partnerships

For additional information including a demonstration of the KPMG Asset Management Platform, take a tour of our interactive website at [visit.kpmg.us/AMP](https://www.kpmg.us/AMP). For insights from our Asset Management practice, visit us at [home.kpmg.us](https://www.kpmg.us).

Contact us

Nader Karimi
Partner, KPMG LLP
Tax
T: +1 916 996 2298
E: nkarimi@kpmg.com

Mike Sullivan
Partner, KPMG LLP
Regulatory Reporting
T: +1 703 286 8000
E: mmsullivan@kpmg.com

Jonathan Hoffee
Managing Director, KPMG LLP
Fund Accounting
T: +1 312 550 1110
E: jhoffee@kpmg.com

Max Taffel
Managing Director, KPMG LLP
Managed Services
T: +1 212 758 9700
E: mtaffel@kpmg.com

Learn about us:



[kpmg.com](https://www.kpmg.com)

Some or all of the services described herein may not be permissible for KPMG audit clients and their affiliates or related entities.

The information contained herein is of a general nature and is not intended to address the circumstances of any particular individual or entity. Although we endeavor to provide accurate and timely information, there can be no guarantee that such information is accurate as of the date it is received or that it will continue to be accurate in the future. No one should act upon such information without appropriate professional advice after a thorough examination of the particular situation.

© 2024 KPMG LLP, a Delaware limited liability partnership and a member firm of the KPMG global organization of independent member firms affiliated with KPMG International Limited, a private English company limited by guarantee. All rights reserved. USCS009635-1H

The KPMG name and logo are trademarks used under license by the independent member firms of the KPMG global organization.