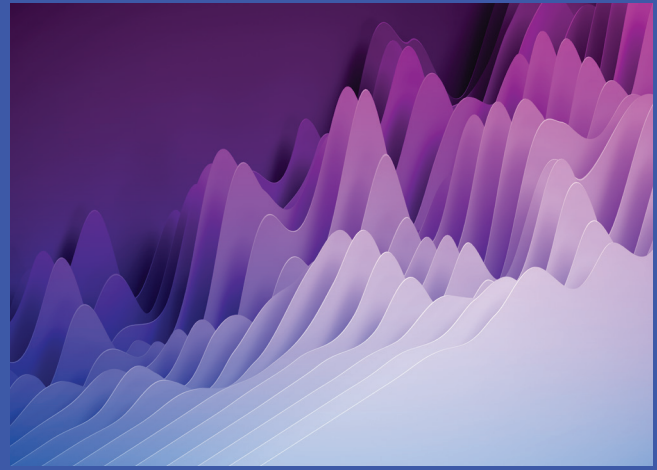




Research Credit Navigator



Determining what qualifies for the Research & Development (R&D) tax credit and what does not is not always easy and capturing and organizing the data to substantiate claims can be time consuming. The Research Credit Navigator tax technology tool can help cut through complexity and transform disparate data into a clear picture of your qualified research expenditures.

Research Credit Navigator

Research Credit Navigator can help you cut through the complexity of IRS rules and requirements related to research credit claims, keeping more of your organization's time and energy focused on exploring new ideas and delivering value.

Benefits

Employing this powerful proprietary software application for capturing, quantifying and reporting research credit information can help create efficiencies and save significant time by way of:



A single system to process, manage, and review wage QREs, thereby preserving the integrity of the data itself and providing instantaneous results.



A standardized approach that permits simultaneous quantitative work streams while keeping teams in different locations all "on the same page."



An IRS-ready process that adheres to IRS substantiation standards including creating the connection between qualified research activities and expenditures.



Audit feature that maintains and manages data to provide for ease of tracking during audits from financial auditors, IRS, or state taxing authorities.



A window into the R&D tax credit analysis when you need it, including identifying possibly overlooked state R&D tax credit benefits not previously considered.

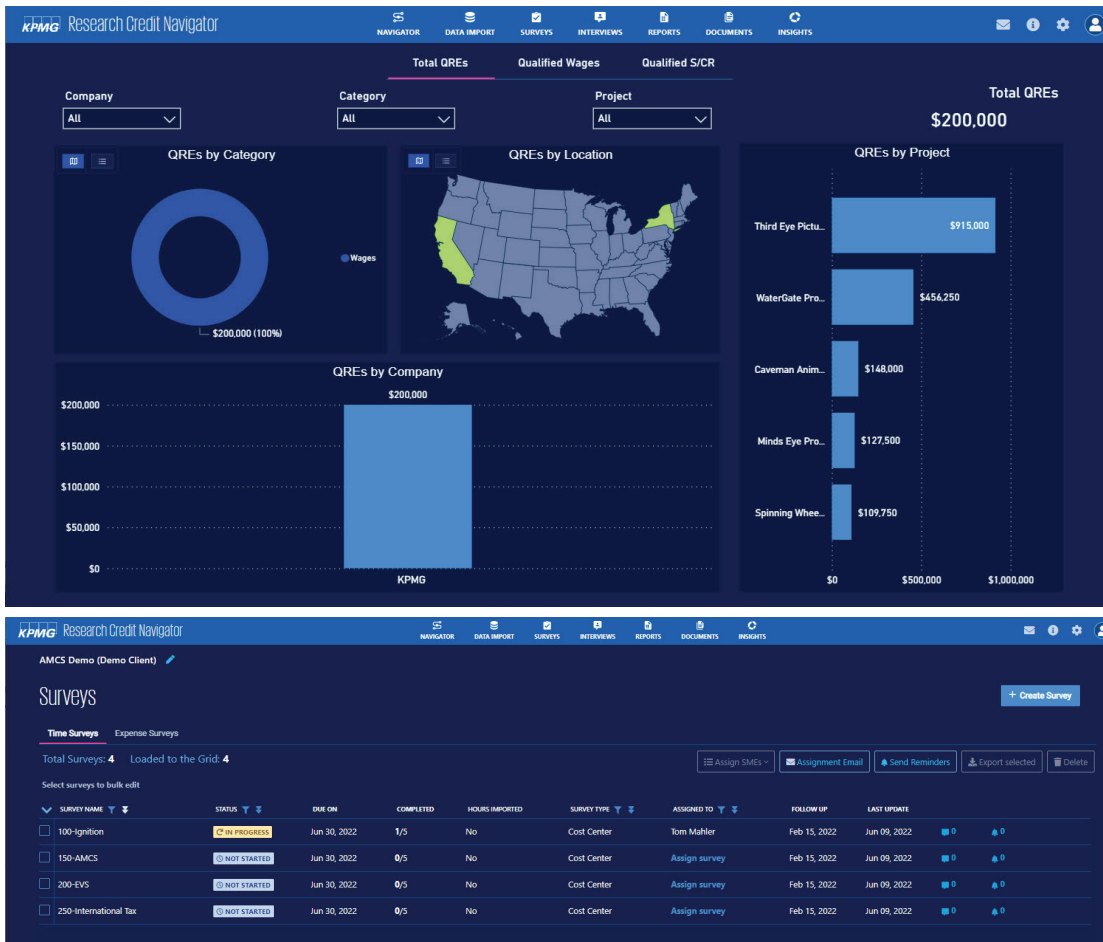
Research Credit Navigator empowers tax departments:

- Identify activities that may be eligible for the R&D tax credit.
- Quantify and document R&D expenses in a customized manner that aligns to your facts and data.
- Reduce regulatory and business risk with a single, detailed audit trail of qualified research expenditures.

Features

To capture, quantify and report the necessary information to substantiate your research credit claims, Research Credit Navigator integrates technology capabilities into a single, powerful platform that provides single sign-on access to:

- **Client workspaces** that allow you and the KPMG engagement team to upload, track and organize data to access, quantify, and review qualified research expenses.
- **Data collection capabilities** that are flexible and can be tailored to your needs.
 - Intuitive client-customized time surveys that are automatically sent to your employees, who will use them to document the time they spend on research and development projects/activities. This information is then used to calculate qualified wages, without any back-end, manual manipulation.
 - Substantiation of time survey results by contemporaneous technical documentation upload capabilities for specific projects, activities, or employees.



- **Dashboards** provide on-demand insight on your QREs. Dashboards track completed and outstanding time surveys, allow for providing reminder emails to outstanding respondents, while identifying potential state R&D credit opportunities based upon your data and the survey results.
- **Reports** that can be customized to summarize the results of the identified qualified research expenses, including the ability to filter expenditures by company, cost center, employee, job title, project or state. Reports are clean, consistent, and standardized.

Contact us

For further information about this application, please contact our national leaders listed below.

Joe Hainly

Partner, Tax
Research Credit Services
Co-Leader
T: 717-571-9823
E: jhainly@kpmg.com

Rachael Moore

Managing Director, Tax
Research Credit Services
Co-Leader
T: 713-907-5308
E: rachaelmoore@kpmg.com

Richard Marcos

Principal, Tax
Credits, Grants &
Incentives Leader
T: 213-817-3188
E: rmarcos@kpmg.com

Thomas Mahler

Partner, Tax
Research Credit Services
T: 503-820-6562
E: tmahler@kpmg.com

Ajay Wanchoo

Managing Director, Tax
Research Credit Services
T: 212-954-4488
E: awanchoo@kpmg.com

Some or all of the services described herein may not be permissible for KPMG audit clients and their affiliates or related entities.

[kpmg.com/socialmedia](https://www.kpmg.com/socialmedia)



The information contained herein is of a general nature and is not intended to address the circumstances of any particular individual or entity. Although we endeavor to provide accurate and timely information, there can be no guarantee that such information is accurate as of the date it is received or that it will continue to be accurate in the future. No one should act upon such information without appropriate professional advice after a thorough examination of the particular situation.

© 2023 KPMG LLP, a Delaware limited liability partnership and a member firm of the KPMG global organization of independent member firms affiliated with KPMG International Limited, a private English company limited by guarantee. All rights reserved. The KPMG name and logo are trademarks used under license by the independent member firms of the KPMG global organization. USCS003720-1A