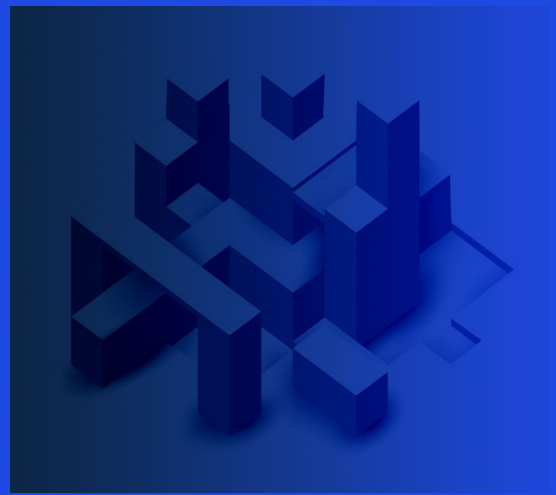




# From ideation to certification

Our program-driven approach to Medicaid Enterprise System modernization



**The KPMG Enterprise Reference Architecture (KERA) links your program goals, state-specific business requirements, and certification outcomes to your program workflows, data and system architecture, providing one achievable plan for delivering your Medicaid Enterprise System (MES) modernization.**

Effective Medicaid enterprise transformation requires a program-first approach. We start with your program challenges and target program outcomes, then sit with your team and stakeholders to define the to-be program workflows needed to deliver those outcomes, which clarifies your team's new and better way of working within the MES.

Only then do we look at technology, defining the data and technical architecture needed to deliver the workflows – the Target Operating Model (TOM) that your new MES will support. In turn, the business, data, and system requirements for your MES are explicitly linked to corresponding Medicaid Information Technology Architecture (MITA) and certification requirements, and to the test requirements needed for implementation and roll-out. We then use these requirements to accelerate and tune implementation of KPMG Resource Integration Suite (KRIS) Connected Platform specifically for your state's program goals.

## Built-in from the start

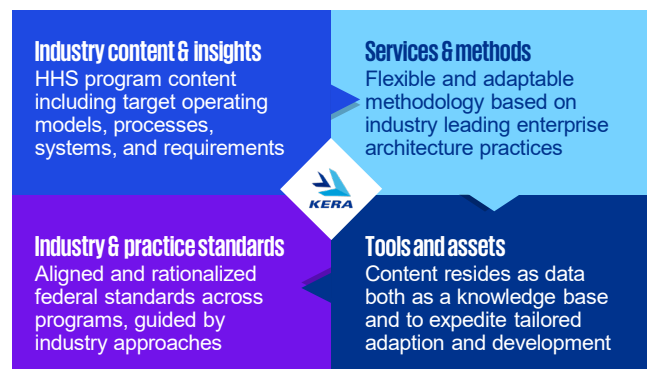
Based on over a decade of KPMG experience helping 33 states modernize their Health and Human Services (HHS) programs, KERA combines content, standards, methods, and tools needed to enable and accelerate a holistic and detailed view of to-be programs.

**Industry content and insights:** KERA includes thousands of program processes based on MITA and KPMG HHS project experience, allowing our clients to tune the specific workflows they need to help deliver their program goals, instead of starting from scratch.

**Industry and practice standards:** MITA and more are built into KERA, allowing our clients to specifically link program workflows, data and technology requirements to the architecture, security, and modeling standards they need to meet.

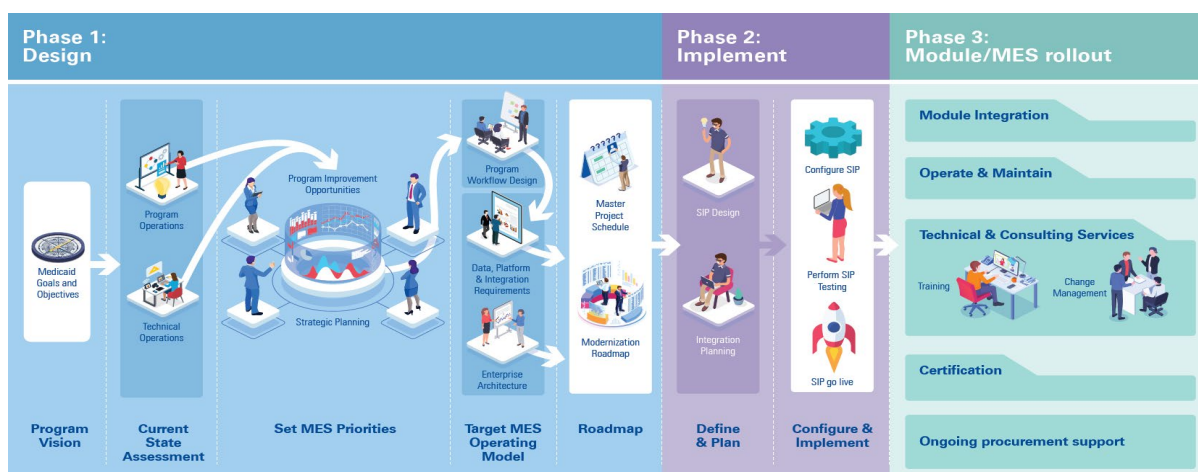
**Services and methods:** Based on leading enterprise architecture practices, KERA imbeds flexible and adaptable methodologies to facilitate and accelerate software development lifecycle phases and pillars of your modernization project: strategy, planning, design, implementation, and governance.

**Tools and assets:** An extensive content library allows our clients to create detailed effort and cost estimates, which can inform project priority and roadmaps, as well as support legislative budget submissions and Advanced Planning Documents (APD) funding requests to the Centers for Medicare & Medicaid Services (CMS).



## How does KERA help you?

- **Accelerates modernization planning and design:** Thousands of MITA and state-designed program processes built-in, providing a configurable baseline that can be readily tuned to each state's unique program goals and requirements.
- **Minimizes rework:** Captures and maps program goals to target program processes, workflows, and data and technical requirements, helping to make sure requirements are accurate, aligned, and complete from the start.
- **Staff alignment and buy-in:** Through visual program workflow development in KERA, agency operations and technical staff work collaboratively to define and understand new work processes, potential program improvements, and quick wins early on, before configuration and deployment starts.
- **Procurement clarity and effectiveness:** KERA content and detailed requirements, tuned for each state's program and goals, can be incorporated into module RFPs, supporting better proposals, fewer vendor questions, less negotiation, and clearer contracting.
- **End-to-end Modernization planning** – KERA supports and accelerates a holistic program-level approach to modernization, from program vision to current state assessment, MES priorities confirmation, program TOM development, and the MES roadmap.



## KERA in action

- **Southeast state** – Using KERA, our team developed the MES TOM and related roadmap and launched a change management initiative. KPMG also coordinated, assessed, and managed the efforts of Systems Integrators (SIs) and government stakeholders. We also developed detailed requirements and cost estimates used in subsequent RFPs and APDs.
- **Northeast state** – Our team completed a detailed assessment of the State's current program goals and technology and operational state to define an alternatives analysis, detailed future MES vision, an implementation roadmap, and projected costs.
- **Southwest state** – Using the State's program process definitions, our team aligned the target program processes to certification requirements to

to define the MES integration standards and patterns, reducing risks to project requirements and timeline.

## The power of connection

Detailed modernization requirements captured in KERA provide a precise and detailed set of requirements which we use to plan, configure and deploy the KRIS Connected Platform, precisely for your program's goals and Target Operating Model. Data sources and transformations, detailed API integration patterns, business rules governing workflow transactions, and more are implemented using the detailed requirements defined in KERA. This helps our clients get it right the first time.

## Contact us

<b>Harvey Levin</b> Managing Director, U.S. HHS Lead 401-225-4832 hblevin@kpmg.com	<b>Mike Wirth</b> Managing Director, MES Lead 804-586-8354 michaelwirth@kpmg.com	<b>Mark Calem</b> Managing Director, SLG Innovation Lead 703-926-7760 mcalem@kpmg.com
--	--	---



Some or all of the services described herein may not be permissible for KPMG audit clients and their affiliates or related entities.