



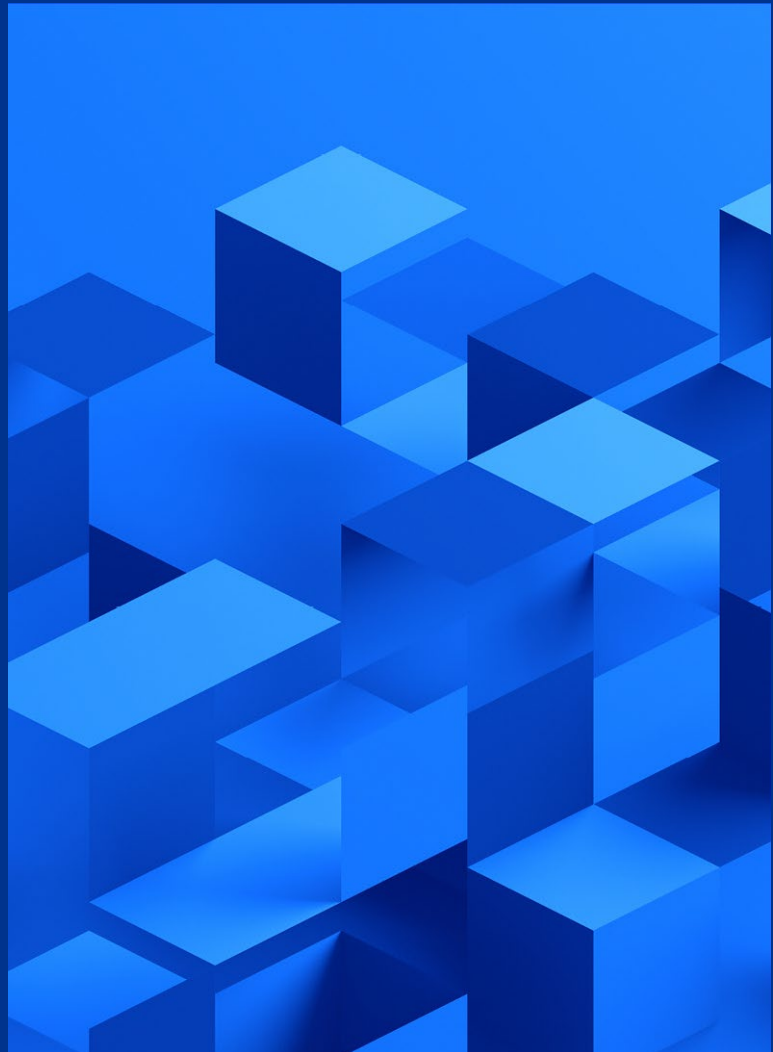
Going concern

Executive summary

US GAAP

December 2025

kpmg.com/us/en/frv



A responsibility of management

The going concern presumption that an entity will be able to meet its obligations when they become due is foundational to financial reporting. This presumption may be challenged at any time, but especially during periods of economic disruption.

Economic disruptors have been prevalent in global markets over the last several years due to many unexpected macro events – uncertainty around tariffs and trade policies, supply chain disruptions, international conflicts, and fluctuating interest rates. The ever-evolving complexities attributable to economic disruption serve to amplify the subjectivity and difficulty of management's going concern analysis.

When forecasting becomes less reliable and the past no longer predicts the future, the going concern assessment becomes much harder to document and update, and robust disclosures much more critical. These vulnerabilities continue to shine a bright light on management's responsibility for a going concern assessment.

This Executive Summary provides a glimpse into management's going concern assessment by first providing an overview and defining key concepts. Next, the discussion is organized in steps to make it easier to identify the elements factored into the analysis and the resulting required disclosures.

Our related Handbook, [Going concern](#), provides an in-depth look into management's going concern assessment and answers many questions that have arisen in our continued practical experience with those assessments.

Overview

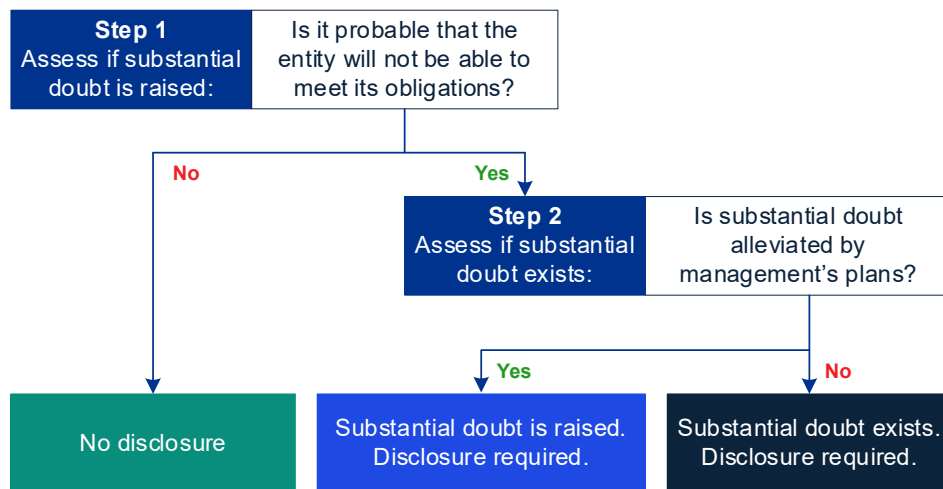
Since 2017, US GAAP has required management to assess an entity's ability to continue as a going concern. Subtopic 205-40 contains the requirements management must follow in conducting its going concern assessment and the disclosures the entity may have to make as a result. Conducting a going concern assessment requires considerable judgment.

Management's assessment is a two-step process that requires determining whether it is probable the entity will be unable to meet its obligations over a defined period. That period – referred to in this Executive Summary as the look-forward period – spans one year from the assessment date – i.e. the date the entity's financial statements are issued or are available to be issued.

Because management's assessment concludes on the assessment date, it reflects events or conditions that occurred after the reporting date up to the assessment date – i.e. subsequent events.

Management must perform the assessment at each reporting period, so the look-forward period is continuously rolling forward.

The assessment – summarized as follows – may lead the entity to disclose information about its ability to continue as a going concern but has no direct effect on its basis of accounting.



Continue to apply going concern basis of accounting until liquidation is imminent

Key concepts

The following are some of the key concepts essential to management conducting a going concern assessment.

Substantial doubt	Substantial doubt about an entity's ability to continue as a going concern is raised when it is probable the entity will not be able to meet its obligations as they become due during the look-forward period.
Probable	Likely to occur, which is interpreted to mean there is a high likelihood that the future event will occur.
Assessment date	The date that the financial statements are: <ul style="list-style-type: none"> • issued, for SEC filers and entities that are conduit bond obligors for conduit debt securities that are traded in a public market; or • available to be issued, for all other entities.
Look-forward period	The period covered by the going concern assessment, which is the 12-month period extending from the assessment date.

To appreciate the relationship between the reporting date, the assessment date and the look-forward period, assume an entity's reporting date is December 31, Year 1, and its financial statements are issued (or available to be issued) on February 28, Year 2. In this example:

- the assessment date is February 28, Year 2; and
- the look-forward period is February 28, Year 2 through February 28, Year 3.

Step 1: Assess whether substantial doubt is raised

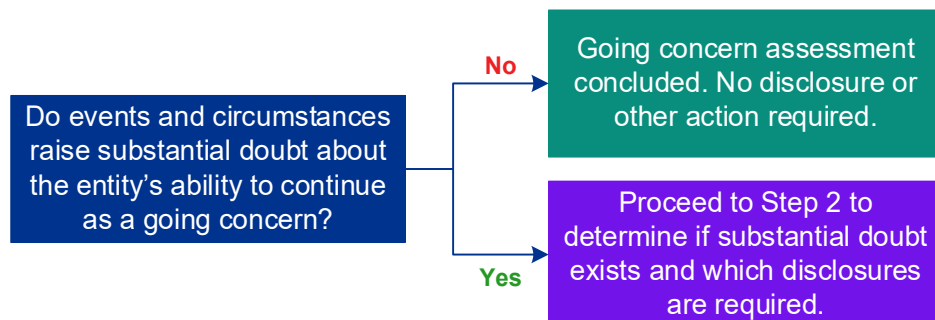
Substantial doubt about an entity's ability to continue as a going concern is raised when it is probable the entity will not be able to meet its obligations as they become due during the look-forward period.

Under Step 1, management determines whether events and circumstances *raise* substantial doubt about the entity's ability to continue as a going concern. Management can make this determination by breaking the process into smaller steps that collectively identify what the entity *has*, *owes* and *needs* to continue to operate throughout the look-forward period. Step 1 notably requires a thorough analysis of the effects of adverse conditions and events on the entity's current financial condition, debt arrangements and detailed cash flow forecasts.

Conditions and events that are known and reasonably knowable at the assessment date are considered in the Step 1 analysis. In addition, management plans and actions considered (or not considered) in the analysis are summarized in the following table.

Management plans and actions	Considered in Step 1?
Actions taken in the normal course of managing the entity	✓
Plans fully implemented by the assessment date	✓
Plans that have not been fully implemented by the assessment date (see Step 2)	✗

Management considers the following after completing its Step 1 analysis.

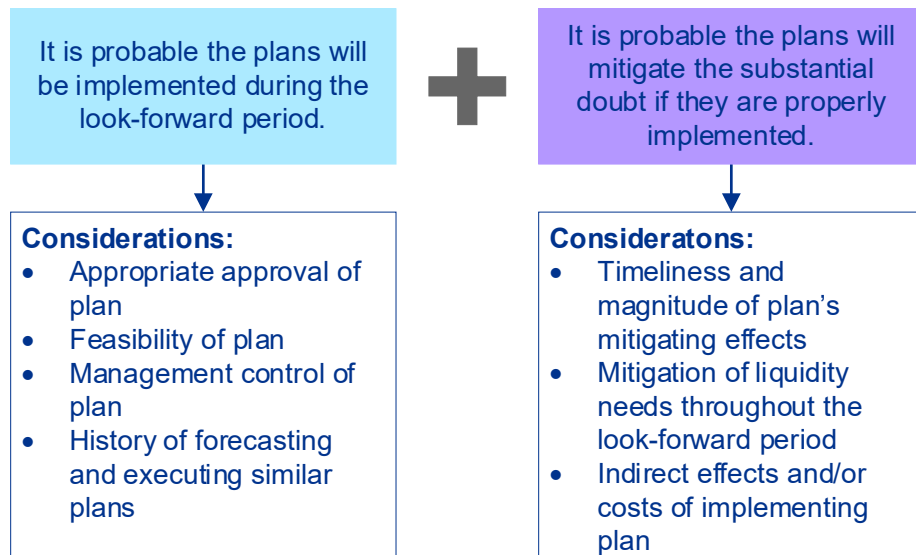


Step 2: Assess whether substantial doubt exists

Substantial doubt about an entity's ability to continue as a going concern exists when such doubt is raised and is not alleviated by management's plans. Under Step 2, management determines whether it has plans to alleviate the substantial doubt that is raised in Step 1. Plans considered (or not considered) in Step 2 are summarized in the following table.

Management plans and actions	Considered in Step 2?
Unapproved plans	✗
Approved plans that have not been fully implemented by the assessment date	✓

Because the plans considered in Step 2 are not fully implemented, they only alleviate substantial doubt about the entity's ability to continue as a going concern if they meet both of the following conditions.



Meeting these conditions may prove challenging when key elements of the plan are beyond management's control.

Additional forecasting to that done under Step 1 is often necessary.

Disclosures

Subtopic 205-40 is a disclosure standard. Therefore, the results of management's going concern assessment informs the required disclosures. There is no direct effect on the entity's accounting.

There are three potential disclosure outcomes from management's going concern assessment. First, no disclosure is required under Subtopic 205-40 if management concludes under Step 1 that substantial doubt has not been raised. The following chart captures the other two outcomes and summarizes the disclosure requirements for each.

Substantial doubt is <i>raised</i> but alleviated	Substantial doubt <i>exists</i>
Disclose principal conditions or events that raise substantial doubt (before consideration of management's plans)	Disclose principal conditions or events that raise substantial doubt
Disclose management's assessment of the significance of those conditions or events in relation to the entity's ability to meet its obligations	
Disclose management's plans that alleviated substantial doubt	Disclose management's plans intended to alleviate substantial doubt
No statement that substantial doubt was raised is required	Include an explicit statement in the notes that indicates there is substantial doubt

The disclosures should be updated in each period as conditions and events change. When substantial doubt ceases to exist during a period, the disclosures should explain how the relevant conditions or events that raised substantial doubt were resolved.

Other considerations

Although management's going concern assessment has no direct effect on an entity's accounting, it can have indirect implications. It also affects an entity's risk assessment and internal controls over financial reporting (ICFR). In addition, an entity's auditors conduct a similar independent going concern assessment that can affect the audit report.

Indirect accounting affects

Management's conclusion that substantial doubt is raised or exists can indirectly affect such accounting matters as:

- hedge accounting;
- current versus noncurrent debt classification;
- deferred tax asset valuation allowances; and
- impairment testing.

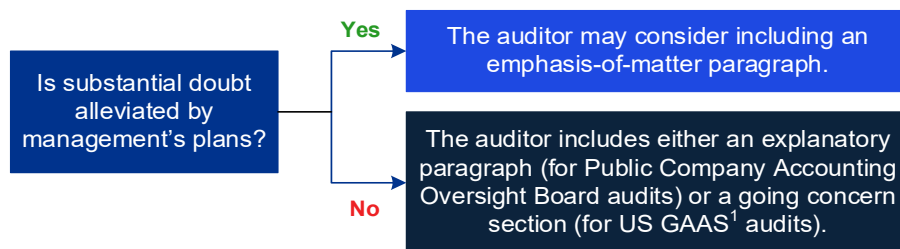
Assumptions used in the going concern assessment should be consistent with assumptions used in addressing these and other accounting matters.

ICFR

Properly conducting a going concern assessment requires a strong risk assessment process and strong ICFR. Management can take certain steps to ensure these processes adequately address the going concern assessment. For example, management can take steps to ensure proper controls exist over any forecasts used in the going concern assessment.

Auditor's assessment

When an auditor's going concern assessment raises substantial doubt, the effect on the auditor's report depends on whether that doubt is alleviated by management's plans. Assuming the financial statement disclosures are adequate, the auditor's report is affected as follows.



Note:

1. Auditing standards issued by the AICPA and followed by auditors in the preparation of audit reports of entities in the United States that are nonissuers.

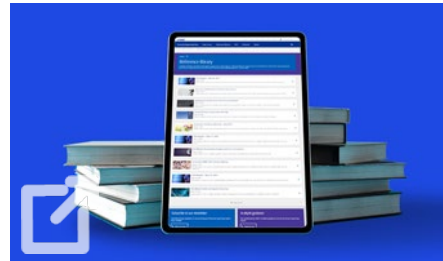
KPMG Financial Reporting View

Delivering guidance and insights, KPMG Financial Reporting View is ready to inform your decision making. Stay up to date with us.



Defining Issues

Our collection of newsletters with insights and news about financial reporting and regulatory developments, including Quarterly Outlook and FRV Weekly.



Handbooks and Hot Topics

Our discussion and analysis of accounting topics – from short Hot Topics that deal with a topical issue, to our in-depth guides covering a broad area of accounting.



CPE opportunities

Register for live discussions of topical accounting and financial reporting issues. CPE-eligible replays also available.



Financial Reporting Podcasts

Tune in to hear KPMG professionals discuss major accounting and financial reporting developments.



Access our in-depth **handbook on going concern** on frv.kpmg.us, and **sign up** for news and insights

Learn about us:  kpmg.com

The information contained herein is of a general nature and is not intended to address the circumstances of any particular individual or entity. Although we endeavor to provide accurate and timely information, there can be no guarantee that such information is accurate as of the date it is received or that it will continue to be accurate in the future. No one should act upon such information without appropriate professional advice after a thorough examination of the particular situation.

© 2025 KPMG LLP, a Delaware limited liability partnership and a member firm of the KPMG global organization of independent member firms affiliated with KPMG International Limited, a private English company limited by guarantee. All rights reserved. The KPMG name and logo are trademarks used under license by the independent member firms of the KPMG global organization.

The FASB Accounting Standards Codification® and other FASB content are copyrighted by the Financial Accounting Foundation, Norwalk, Connecticut, and are used with permission.