



Business Visitor Assist



See where you're going

KPMG Business Visitor Assist provides instant, personalised assessments of the Australian visa, personal income tax and superannuation implications of proposed business trips to Australia, with minimal interruption to the traveller or the business.

KPMG's Business Visitor Assist is designed to make compliance simple. Our approach combines tax and immigration technical expertise, sophisticated data analysis with automation to streamline the assessment and compliance process.

Employees can conveniently record travel plans and receive instant pre-travel instructions via email regarding their visa and tax obligations, and instructions on next steps. This immediate assessment enables employees to apply for the correct business visitor visa on line, or link directly to KPMG's immigration team where a work permit application is needed.

The employer dashboard provides an at-a-glance summary of all assessments. With consistent compliance controls, live statistics and management information for your international business visitors, you can manage all of your employment tax obligations from one place.

To find out more visit [KPMG.com/au/businessvisitorassist](https://www.kpmg.com/au/businessvisitorassist)

Daniel Hodgson

Partner

T: +61 8 9278 2053

E: dghodgson@kpmg.com.au

Belinda Wright

Partner

T: +61 2 9335 7031

E: bwright3@kpmg.com.au

Ablean Saoud

Partner

T: +61 2 9335 8550

E: asaoud@kpmg.com.au

Hayley Lock

Partner

T: +61 7 3434 9176

E: hlock@kpmg.com.au

Mardi Heinrich

Partner

T: +61 3 9838 4348

E: meheinrich@kpmg.com.au

Jackie Shelton

Partner

T: +61 2 9335 8511

E: jsshelton@kpmg.com.au

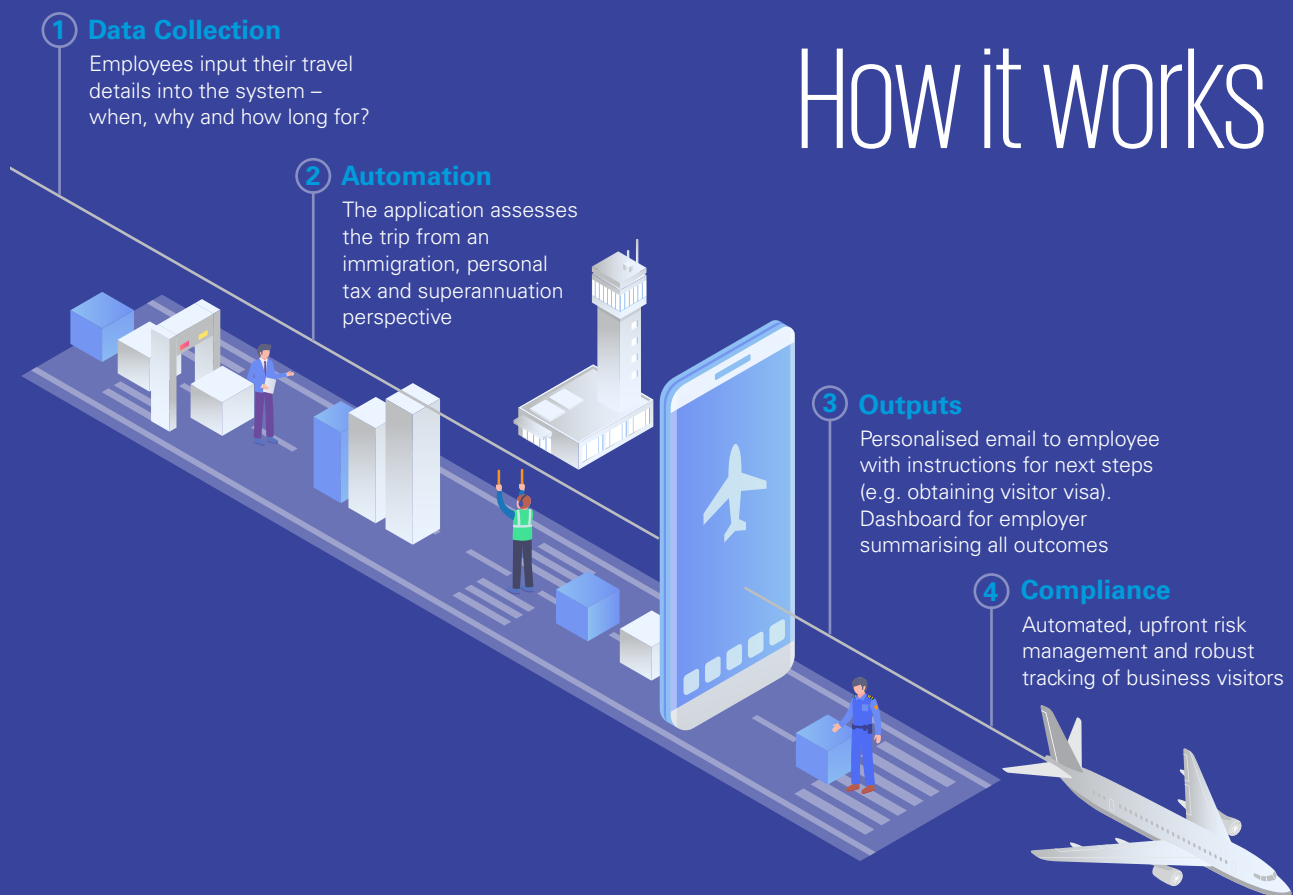
Why this matters

For many large multi-national companies, having visibility of employee travel has become a business-imperative to reduce risks and costs. Employers' duty of care to their people extends well beyond an employee's physical safety – just as organisations focus on employees' well-being whilst travelling on business, their ability to enter Australia and carry out their role can also be impacted now and in the future if certain tax and immigration requirements are not met. However, a lack of formal policies, procedures and systems around business visitors can often cause companies to overlook income tax and superannuation obligations, or result in immigration non-compliance.

Overlooking these matters can have a detrimental domino effect on your organisation's ability to operate effectively in Australia, and lead to financial and reputational exposures.

KPMG Business Visitor Assist helps you address these risks **before** the traveller gets on the plane.

How it works



[KPMG.com.au/businessvisitorassist](https://www.kpmg.com.au/businessvisitorassist)

The information contained in this document is of a general nature and is not intended to address the objectives, financial situation or needs of any particular individual or entity. It is provided for information purposes only and does not constitute, nor should it be regarded in any manner whatsoever, as advice and is not intended to influence a person in making a decision, including, if applicable, in relation to any financial product or an interest in a financial product. Although we endeavour to provide accurate and timely information, there can be no guarantee that such information is accurate as of the date it is received or that it will continue to be accurate in the future. No one should act on such information without appropriate professional advice after a thorough examination of the particular situation.

To the extent permissible by law, KPMG and its associated entities shall not be liable for any errors, omissions, defects or misrepresentations in the information or for any loss or damage suffered by persons who use or rely on such information (including for reasons of negligence, negligent misstatement or otherwise).

©2021 KPMG, an Australian partnership and a member firm of the KPMG global organisation of independent member firms affiliated with KPMG International Limited, a private English company limited by guarantee. All rights reserved.

The KPMG name and logo are trademarks used under license by the independent member firms of the KPMG global organisation.

Liability limited by a scheme approved under Professional Standards Legislation.

April 2021. 674287036DTL