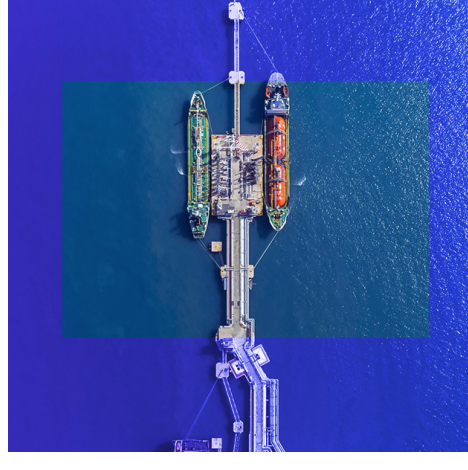




Real Insights for Operations

March 2024

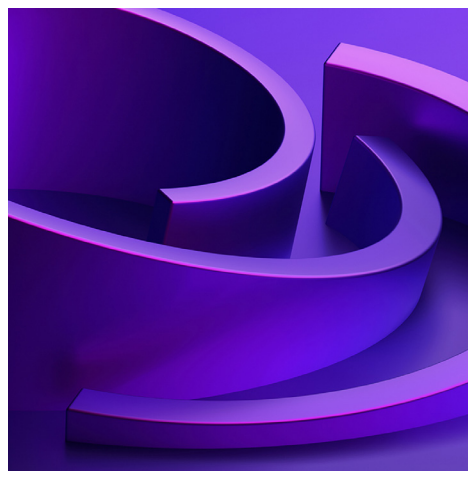
[Our latest insights](#)



[The imperative of real-time visibility](#)

Companies with greater supply chain visibility are better positioned to weather all forms of disruption. Learn how technology enablement can help you achieve this.

[Read more](#)



[Is procurement driving your business forward?](#)

Discover the critical considerations for building a forward-looking procurement function that can innovate and rise to meet the challenges of a volatile world.

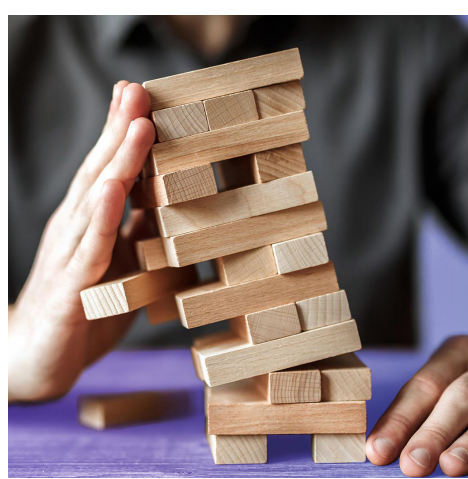
[Learn more](#)



[‘Smart’ supply chains: All about agility, resilience, and sustainability](#)

Amid persistent turbulence and volatility, building resilient responses to ongoing supply and demand shocks is critical. Know how you can future-proof and fortify your supply chain.

[Explore supply chain trends 2024](#)



[Overcoming hurdles to GenAI in procurement](#)

GenAI is transforming procurement as we know it, but overcoming institutional and regulatory hurdles while making the most of the technology calls for a responsible AI framework at the outset.

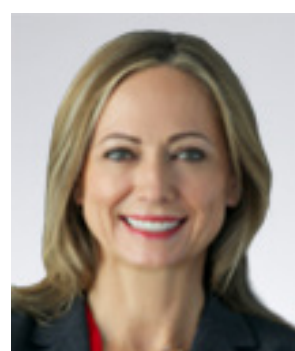
[Get started today](#)

To learn more about the topics mentioned or suggest ideas for this publication, [please email us](#).

[Visit our Real Insights for Operations web page](#) to explore our latest viewpoints on top-of-mind issues for operation leaders.

[Subscribe](#)

If your colleagues would be interested in receiving this newsletter, please direct them to our [subscription page](#).



[Mary Rollman](#)

Principal
Supply Chain Leader
KPMG US



[Chris McCarney](#)

Principal
Procurement & Outsourcing
Advisory Leader
KPMG US

Some or all of the services described herein may not be permissible for KPMG audit clients and their affiliates or related entities.



[Privacy](#) | [Legal](#)

You have received this message from KPMG LLP. If you wish to unsubscribe from this publication or from other KPMG communications, please [click here](#). To unsubscribe from all KPMG communications, [click here](#).

KPMG LLP, 3 Chestnut Ridge Road, Montvale, NJ 07645

© 2024 KPMG LLP, a Delaware limited liability partnership and a member firm of the KPMG global organization of independent member firms affiliated with KPMG International Limited, a private English company limited by guarantee. All rights reserved.

The KPMG name and logo are trademarks used under license by the independent member firms of the KPMG global organization.